



# Certificat B

NAVIGATION

LEX BENTNER (LBENTNER@PT.LU)

## Tidal levels

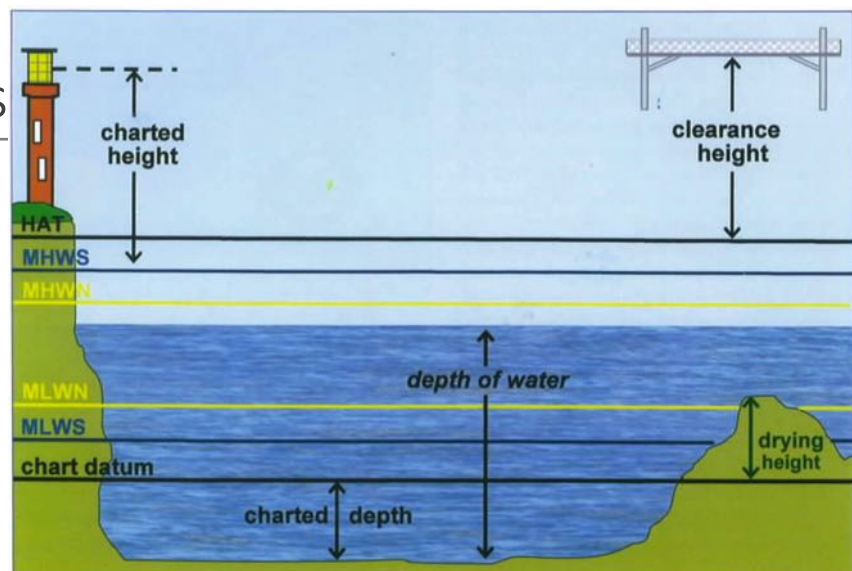


Fig 5.3 Tidal levels.

tidal height needed

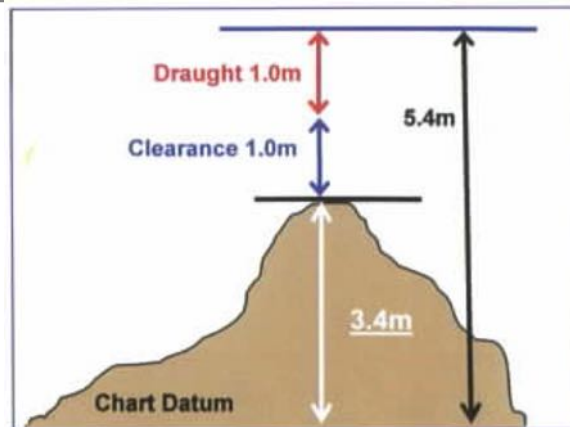


Fig 5.9 The height of tide required is 5.4m.

Secondary Port



# Secondary Ports

Standard Port ST MALO							
Times				Height (metres)			
High Water		Low Water		MHWS	MHWN	MLWN	MLWS
0100	0800	0300	0800	12.2	9.3	4.2	1.5
1300	2000	1500	2000				
Differences LÉZARDRIEUX							
-0020	-0015	-0055	-0045	-1.7	-1.3	-0.5	-0.2

1

2

3

4

Fig 5.14 Time and height differences for Lézardrieux.

# Secondary Port

## Endal Marina

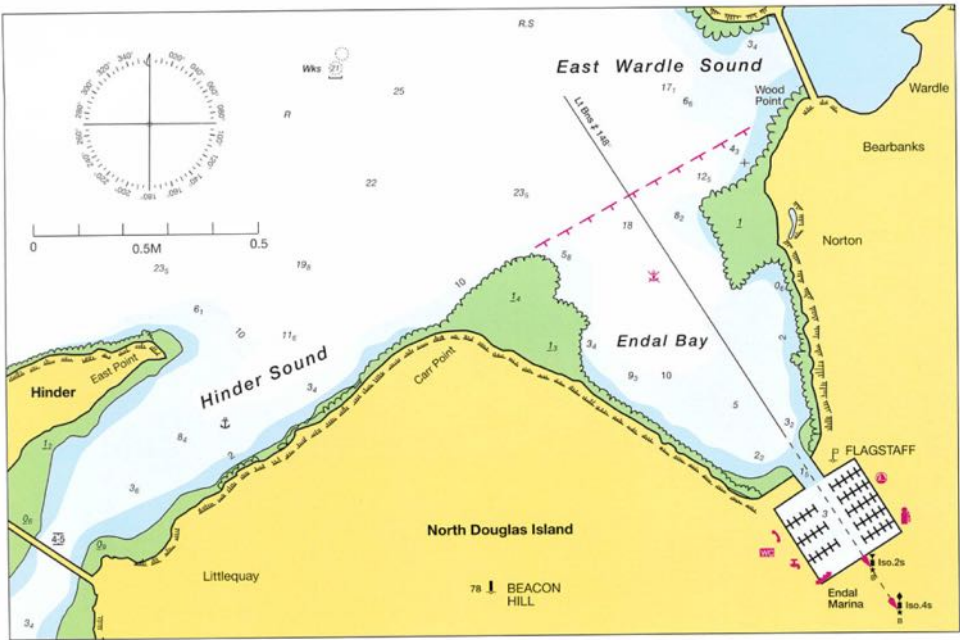
46°13'.99N 005°46'.93W  
Northern Territories CHARTS RYA 3, 4.

Standard Port PORT FRASER ( ← )

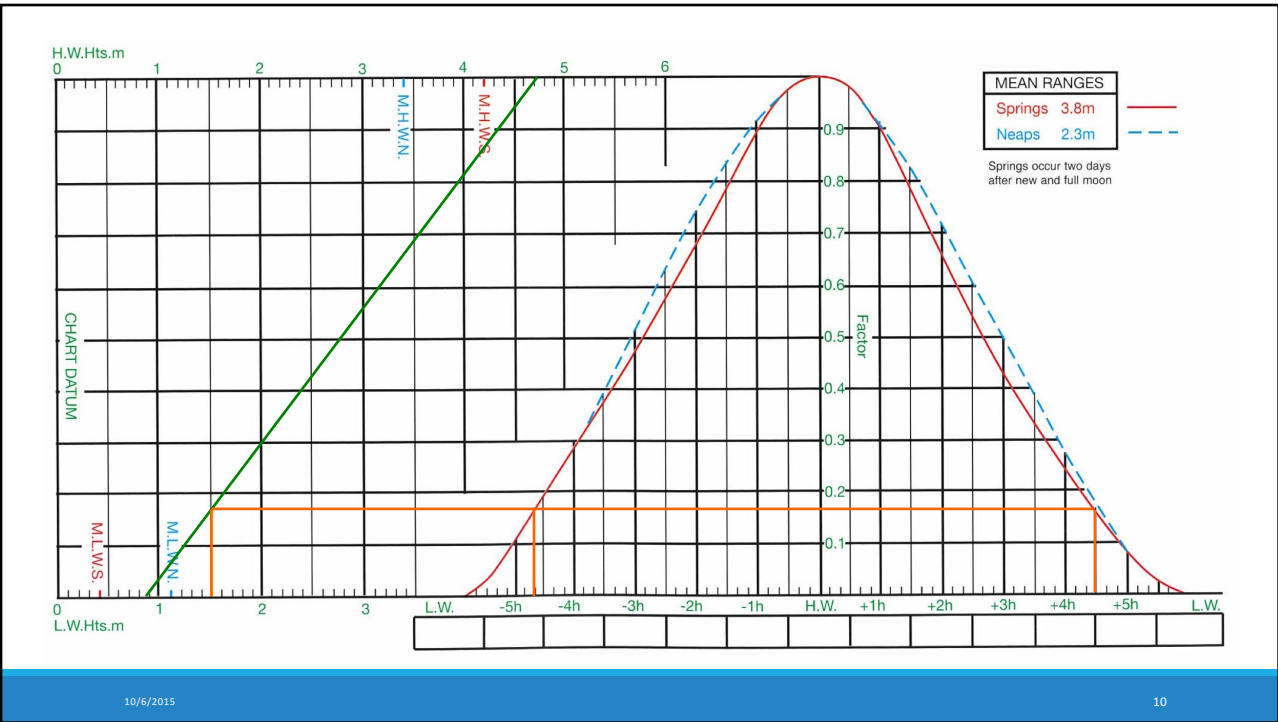
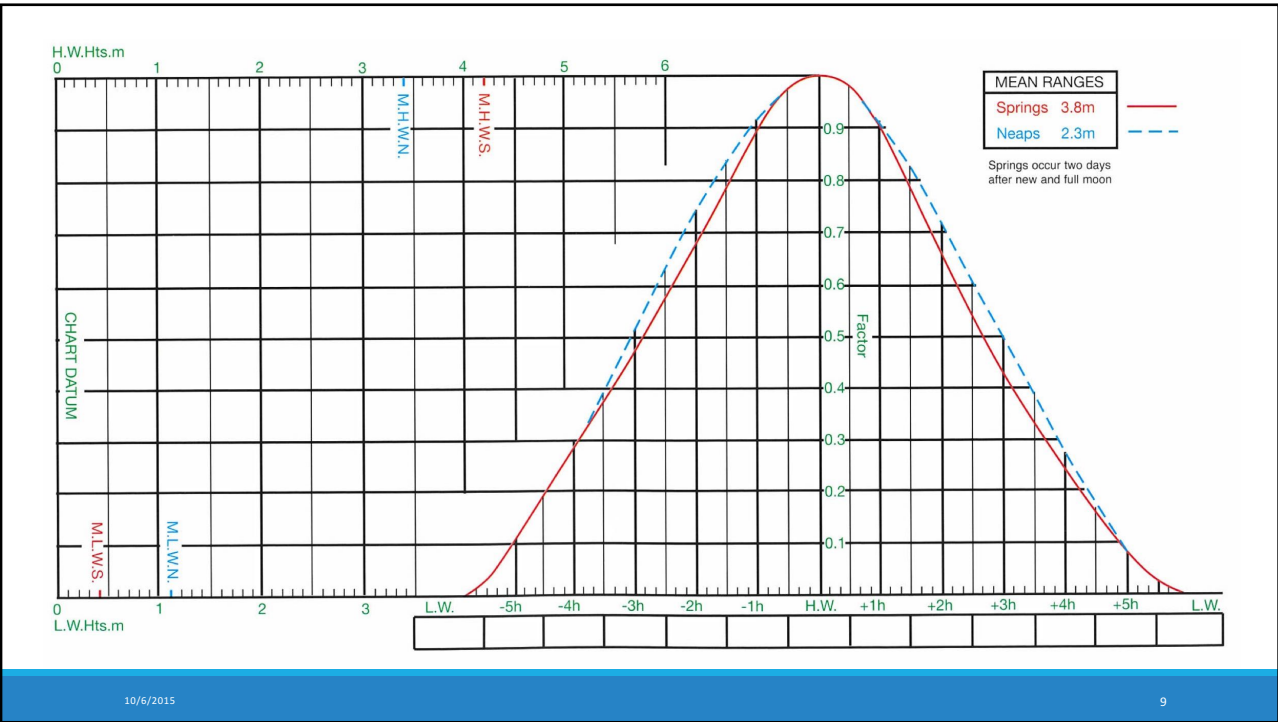
Times		Height (metres)		MHWS	MHWN	MLWN	MLWS
High Water	Low Water	High Water	Low Water				
0000	0600	0500	1100	4.2	3.4	1.1	0.4
1200	1800	1700	2300				
Differences ENDAL MARINA							
-0042	-0017	-0040	-0012	+0.4	+0.1	+0.4	0.0

# Endal Marina

12. September, late afternoon  
Draught of 2.20m + safety of 30 cm.  
Until when can we access the marina?



12	0300	4.2
TH	0853	0.7
	1514	4.3
	2126	0.5



# Trockenfallen

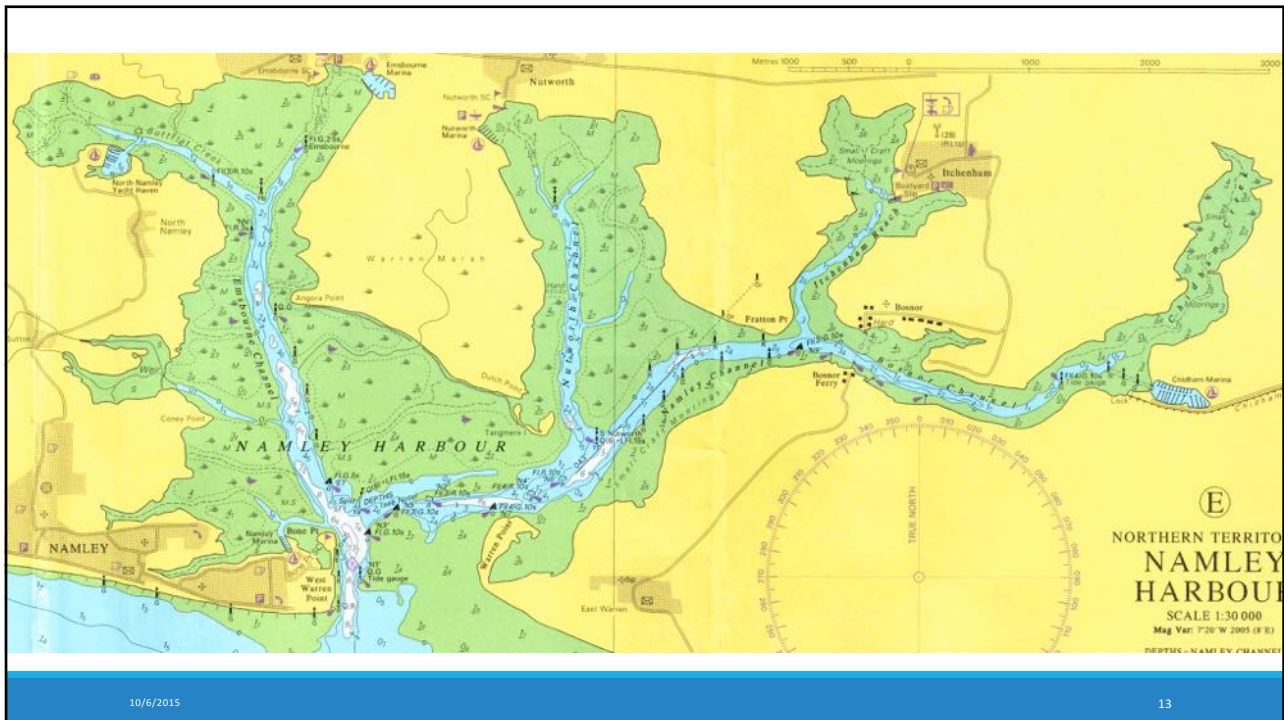
---

10/6/2015

11



12



## Namley Harbour - Itchenham

27. April

Late morning HW

Itchenham, W part of the small craft moorings

Catamaran, 1.20m draught, additional safety of 0.20m

Time of arrival?

Replacing anodes from when until when?

Time of departure the following morning?



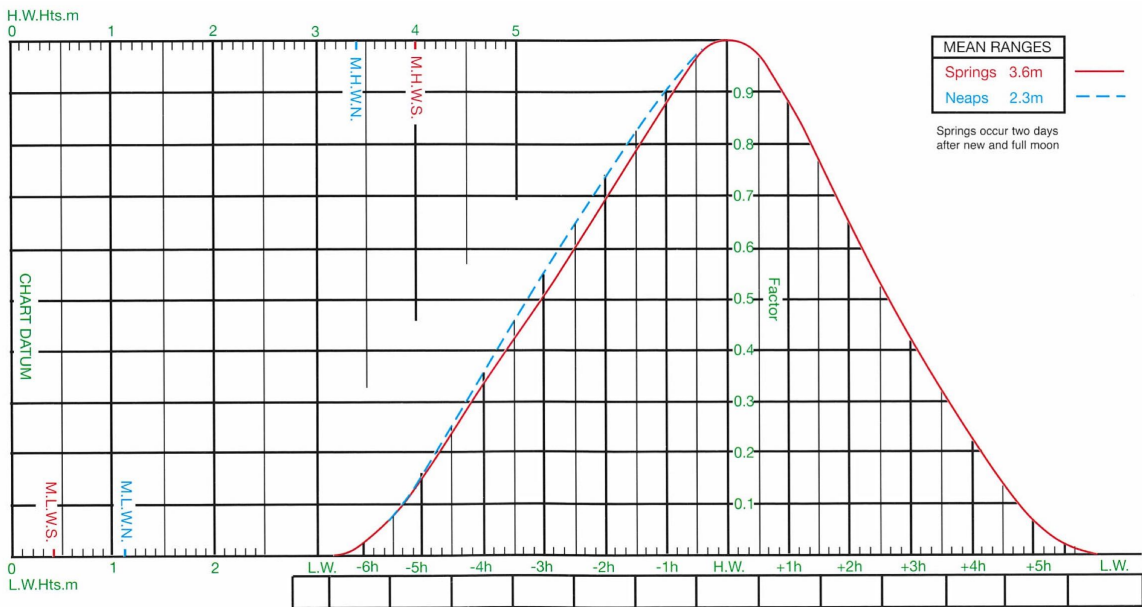
NAMLEY HARBOUR - Standard Port

46°25'.74N 005°46'.70W  
Northern Territories CHARTS RYA 3, 4.

27 0519 0.0  
1150 4.2  
SA 1733 0.3  
O

Standard Port NAMLEY HARBOUR ( → )

Times		Height (metres)					
High Water		Low Water		MHWS	MHWN	MLWN	MLWS
0000	0600	0000	0600	4.0	3.4	1.1	0.4
1200	1800	1200	1800				
Differences ITCHENHAM							
+0020	+0010	-0005	0000	-0.2	-0.1	-0.1	-0.1
Differences EMSBOURNE							
+0010	+0010	-0010	-0005	-0.3	-0.1	0.0	-0.1

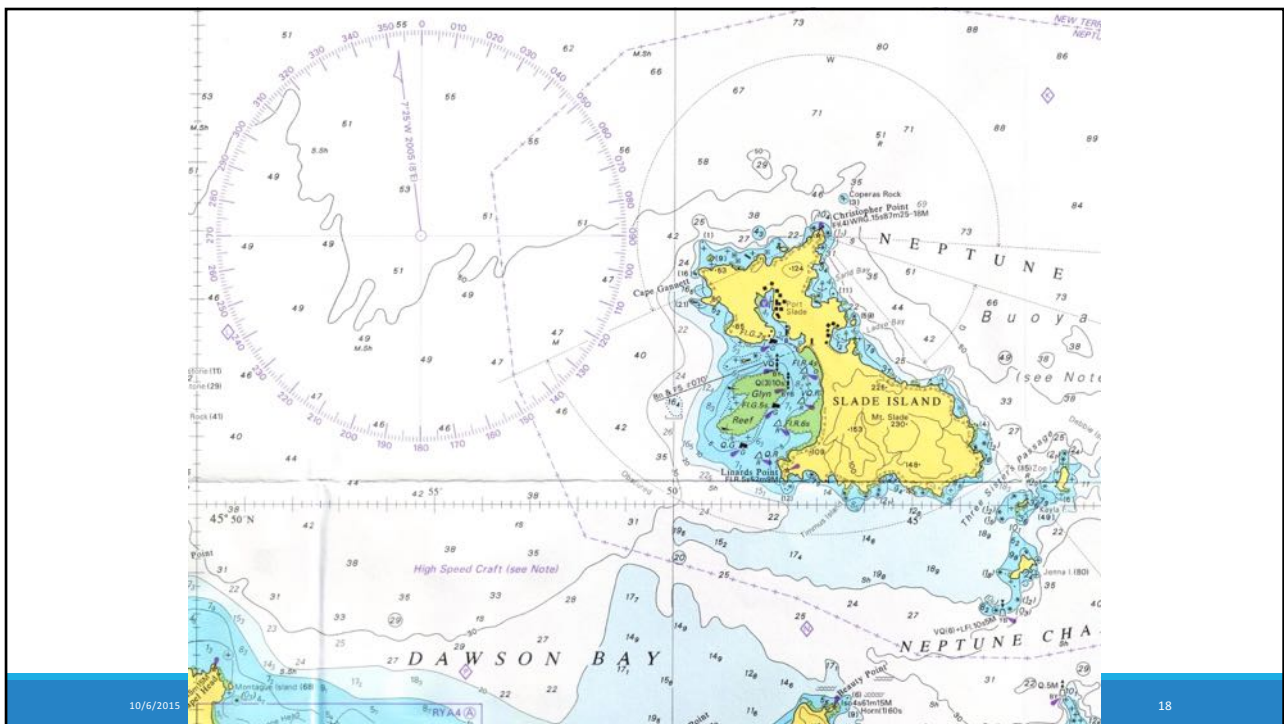




# GPS and Waypoints

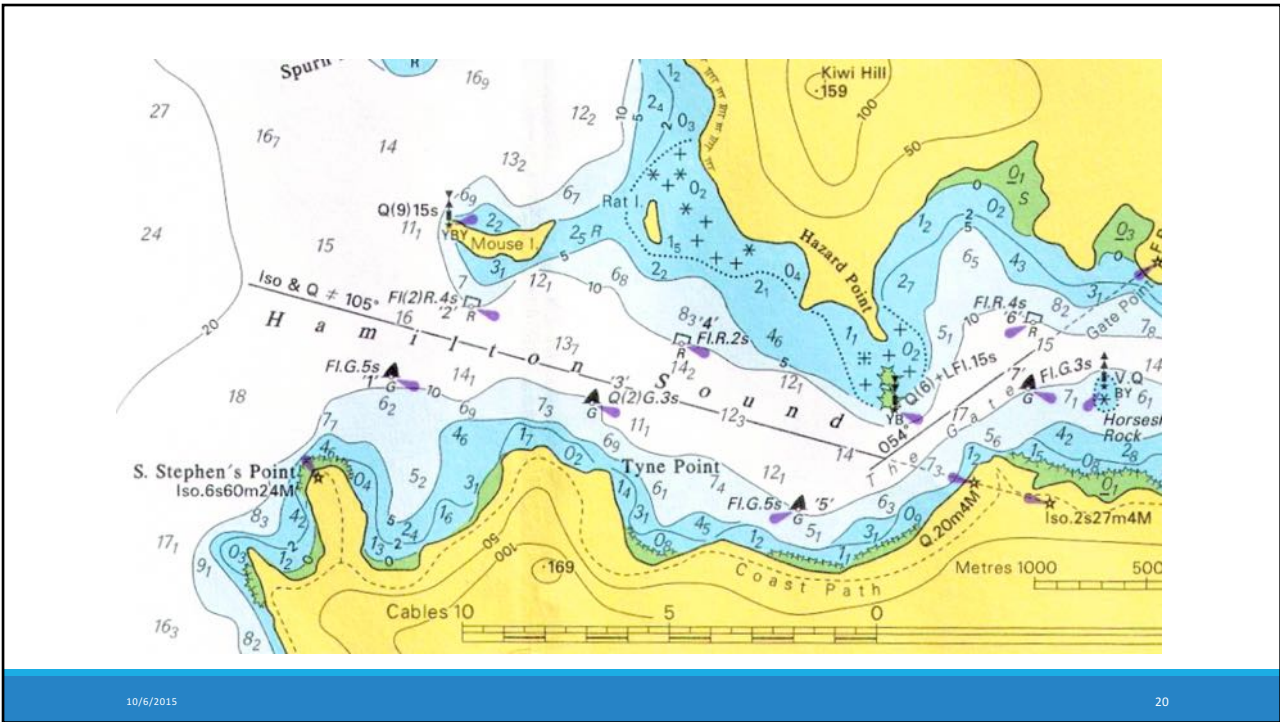
10/6/2015

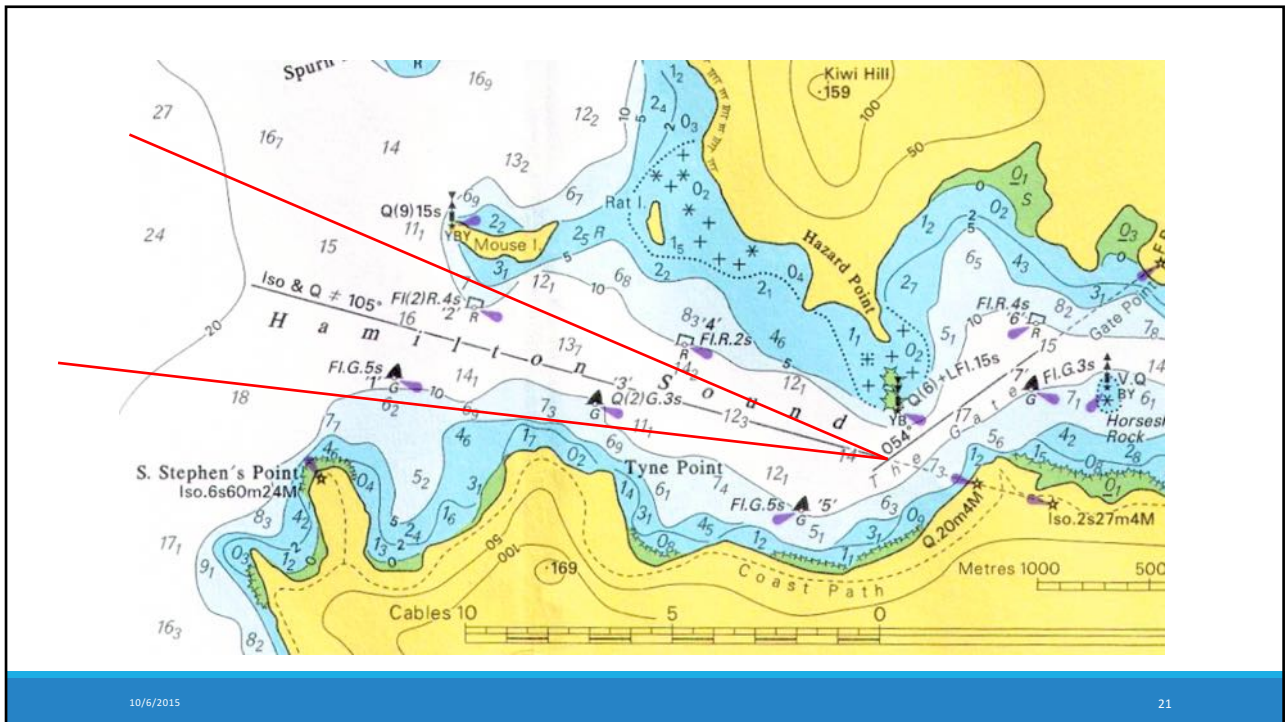
17



10/6/2015

18





10/6/2015

21