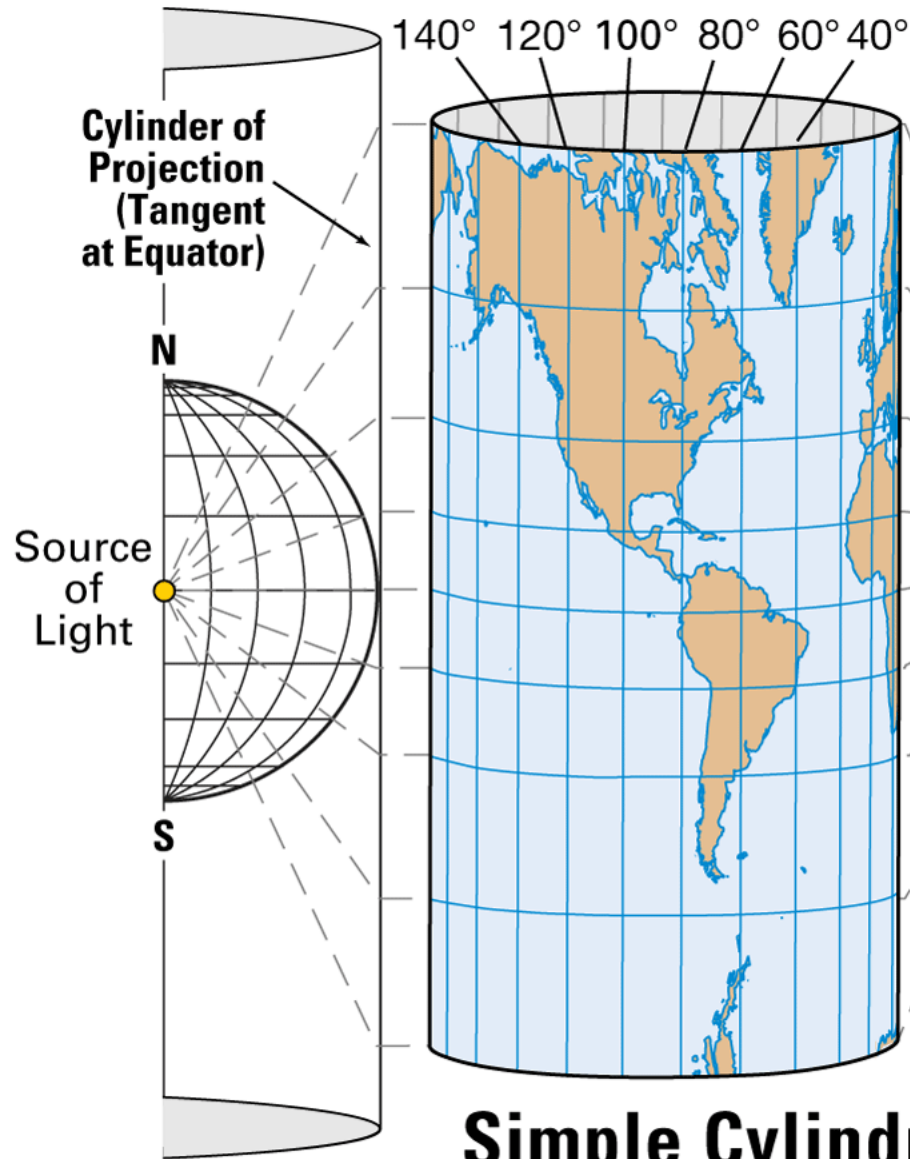


La carte marine

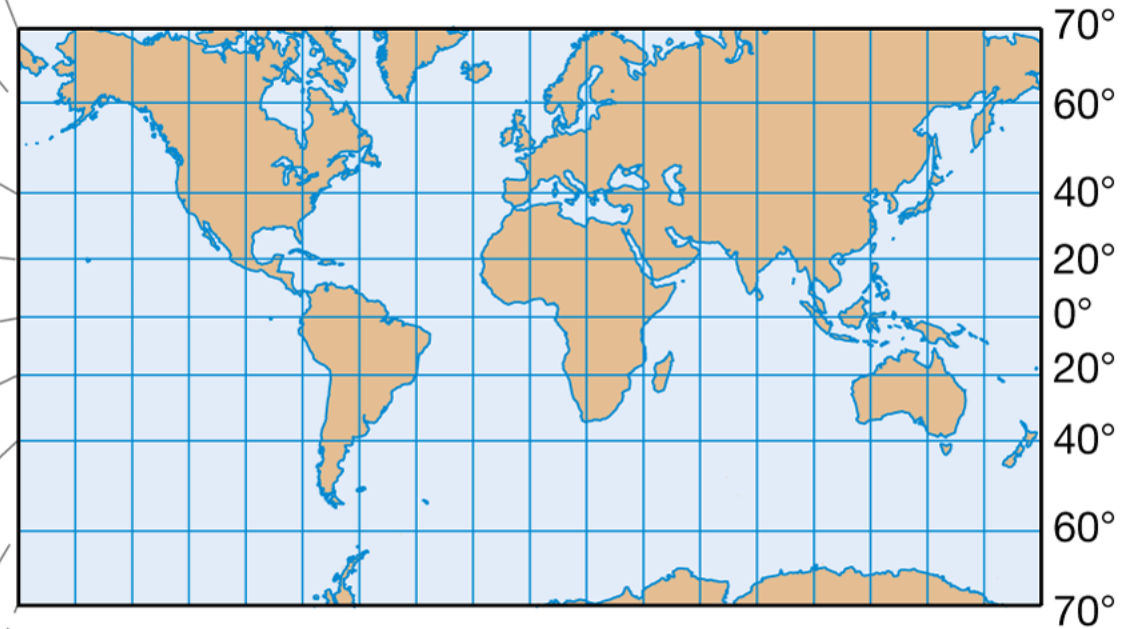
carte marine

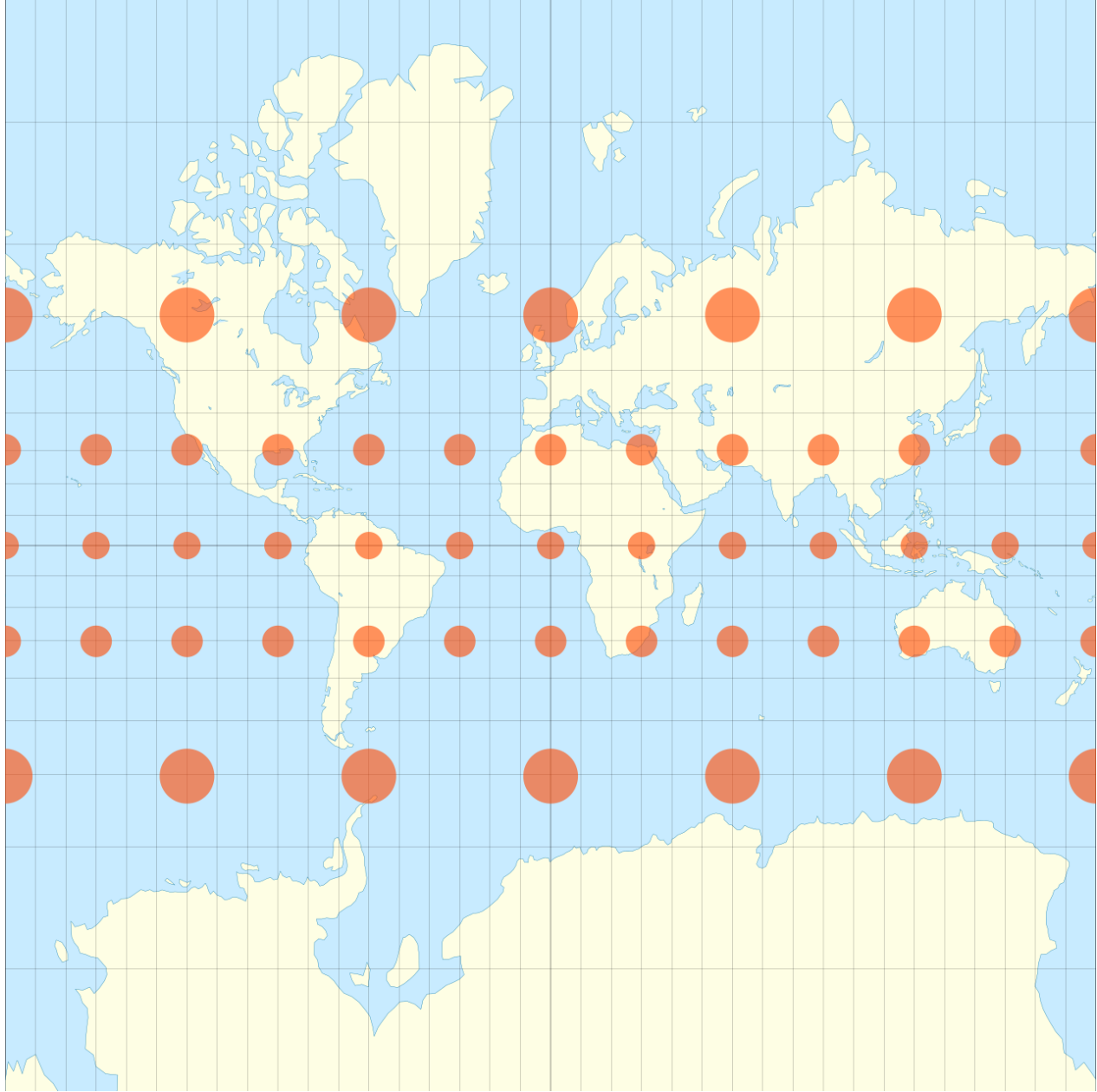
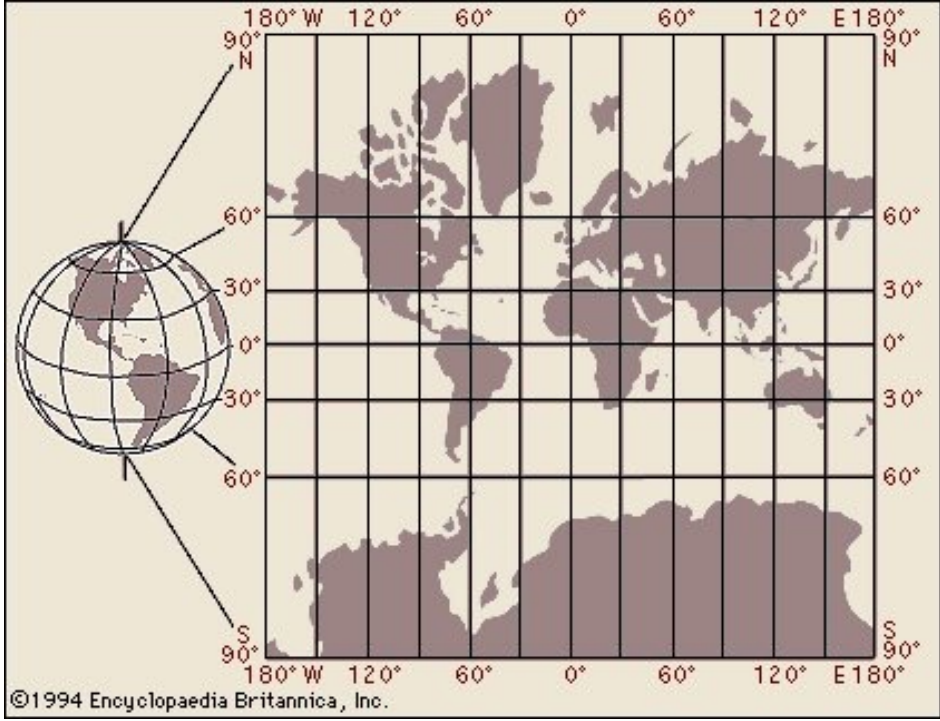
- projection Mercator
- distortion
- latitude & longitude
- ajustements horizontal et vertical
- information sur la carte
- publications les plus communes
- mise-à-jour des cartes
- utilisation de la pointe sèche et de la règle



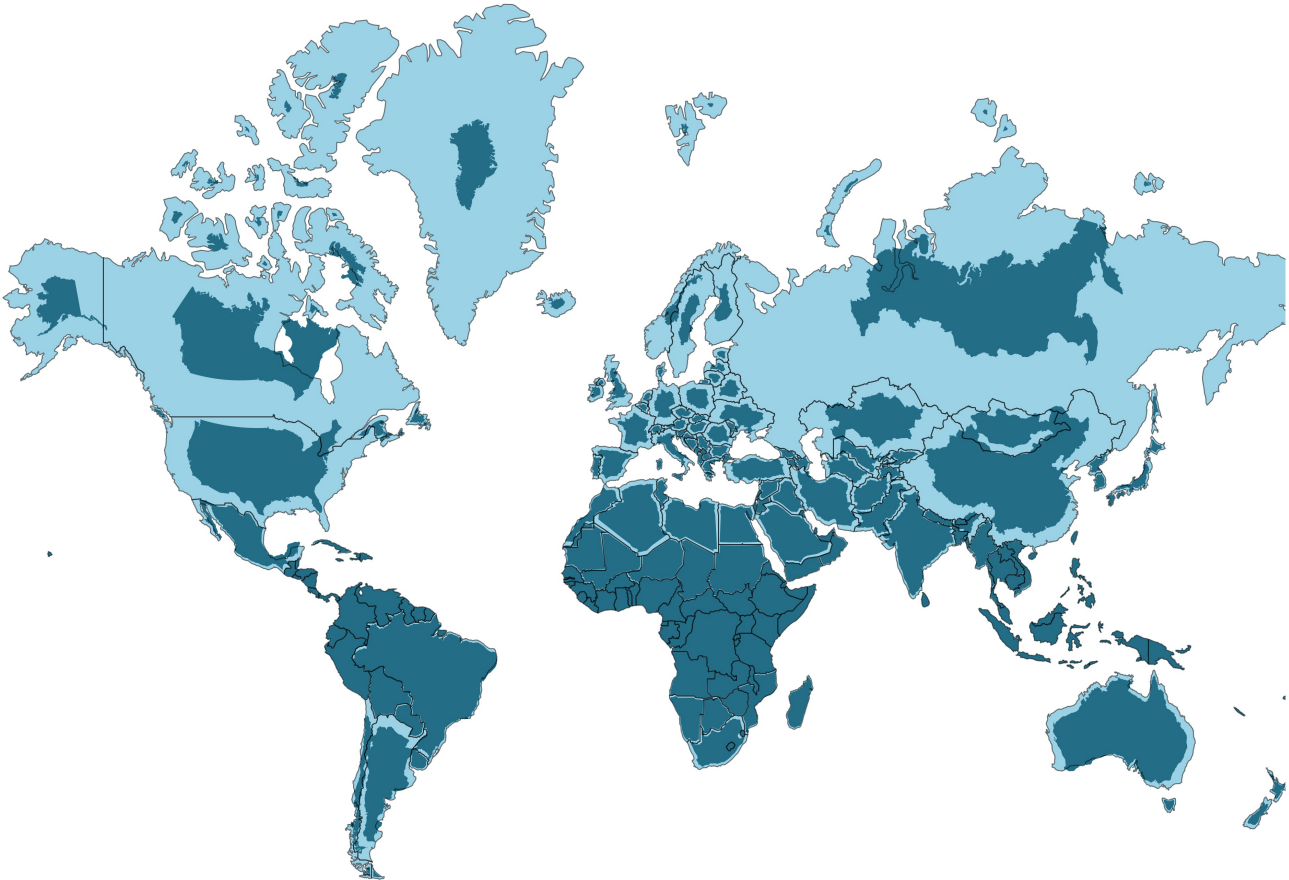
**Simple Cylindrical
Projection**

Mercator Projection





World Mercator projection with true country size and shape added



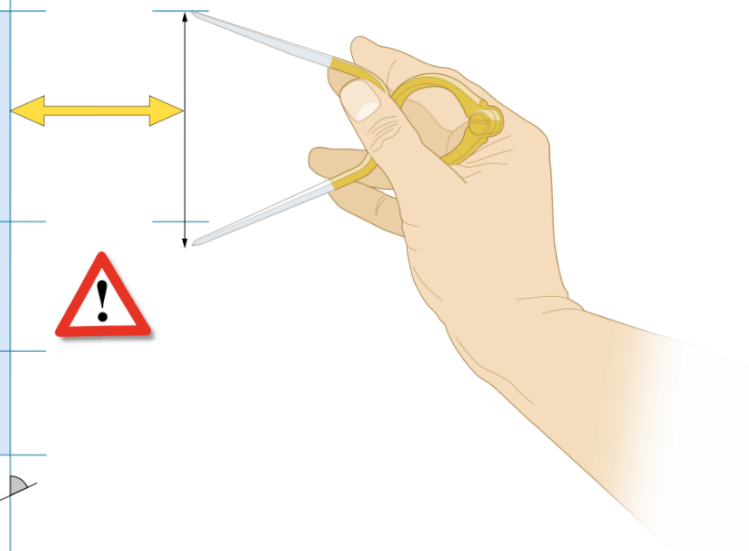
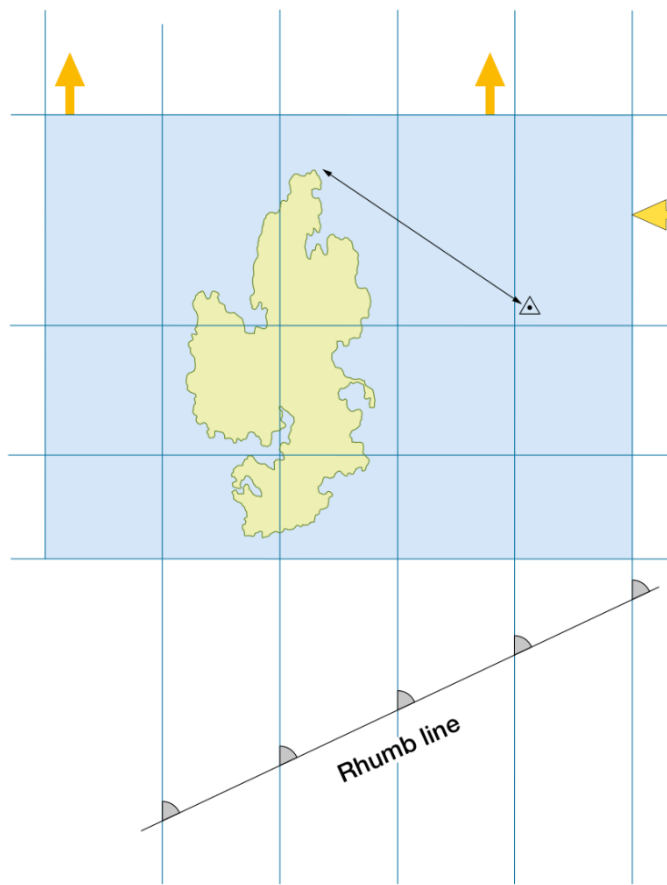
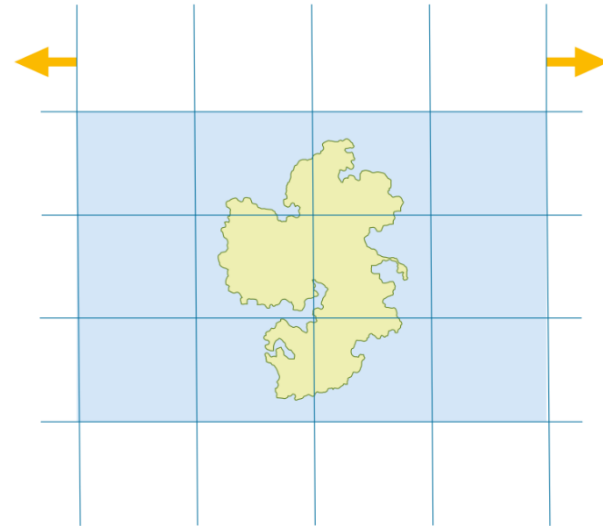
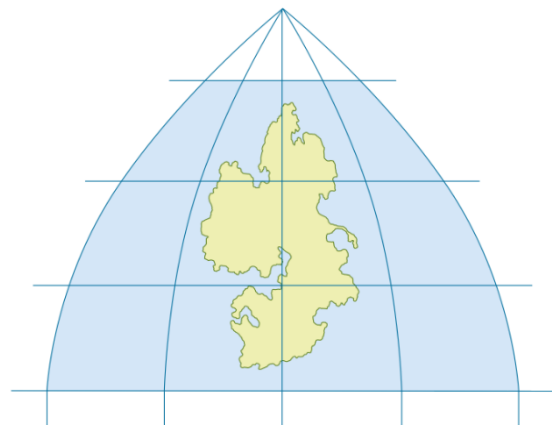
Greenland vs Africa



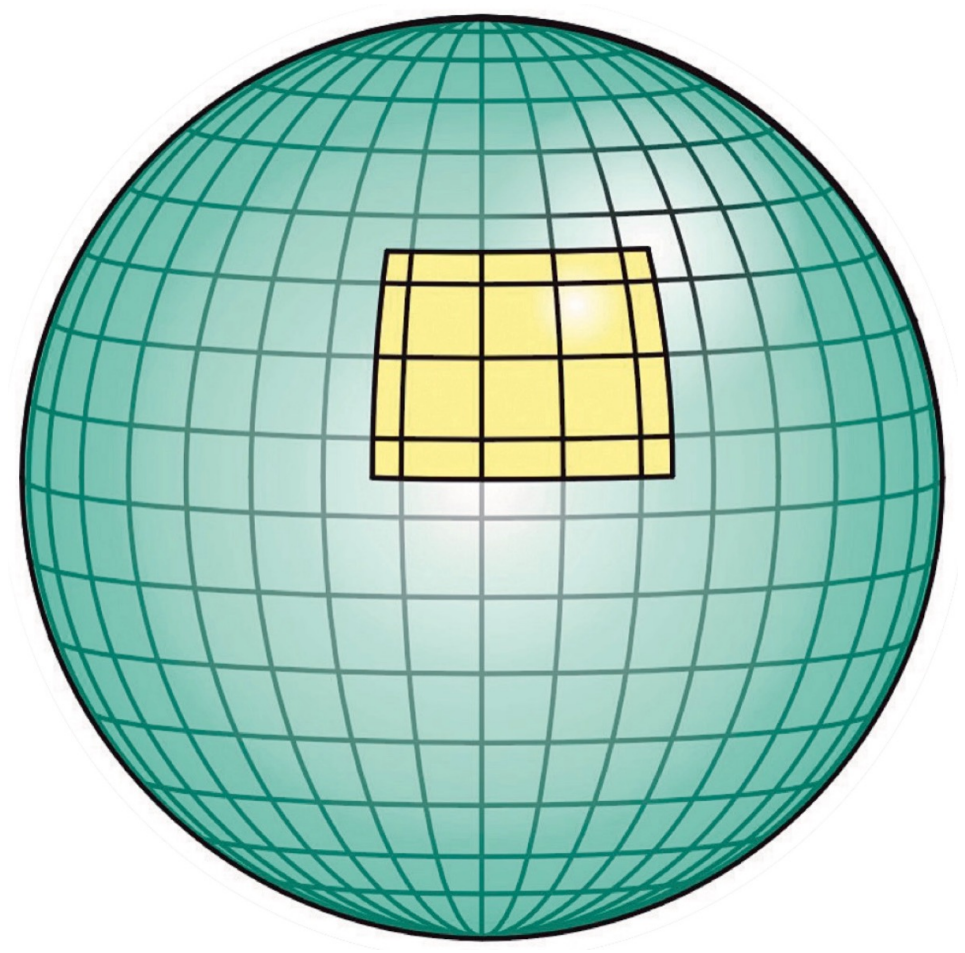
Mercator Projection

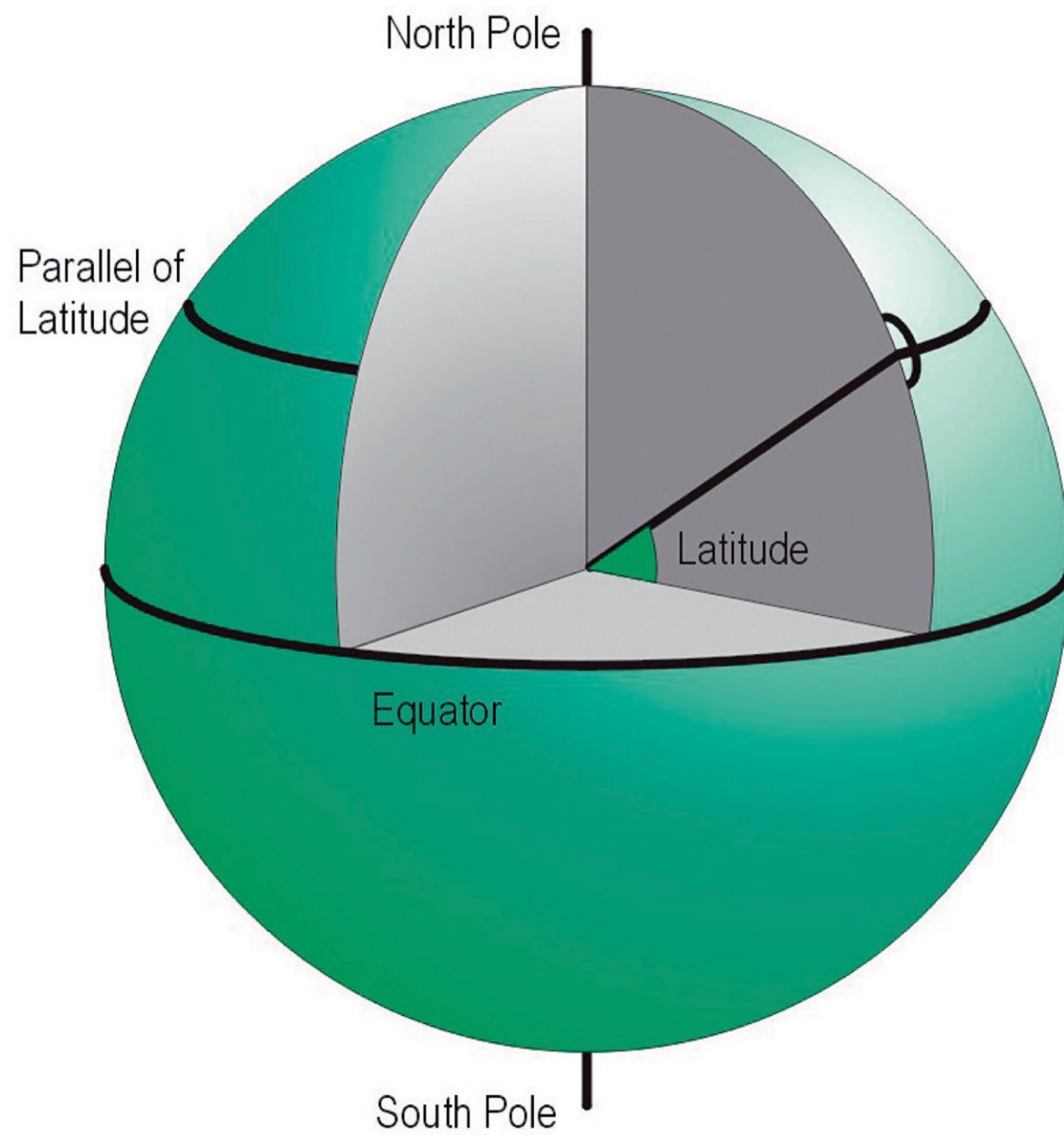


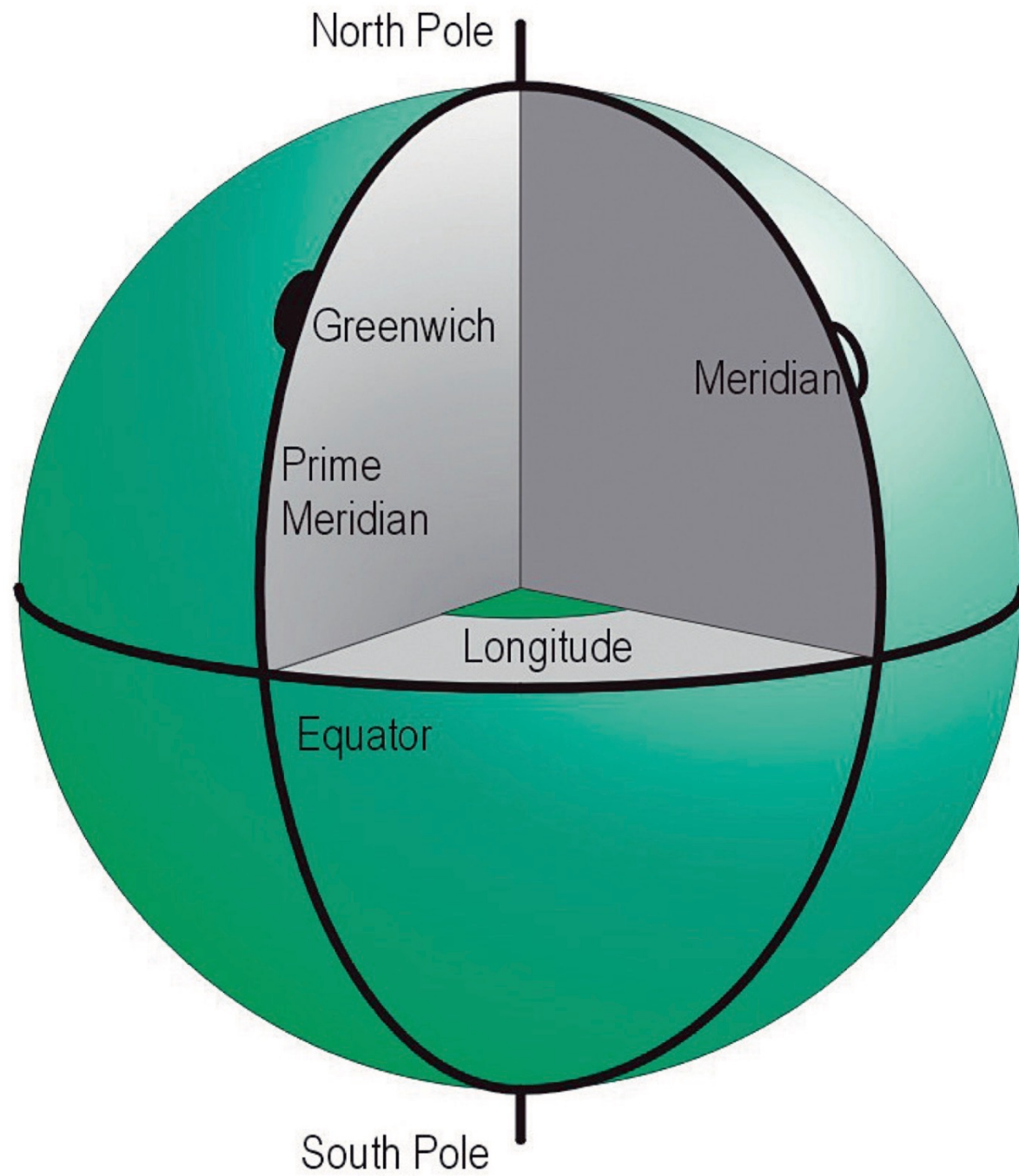
Actual Size

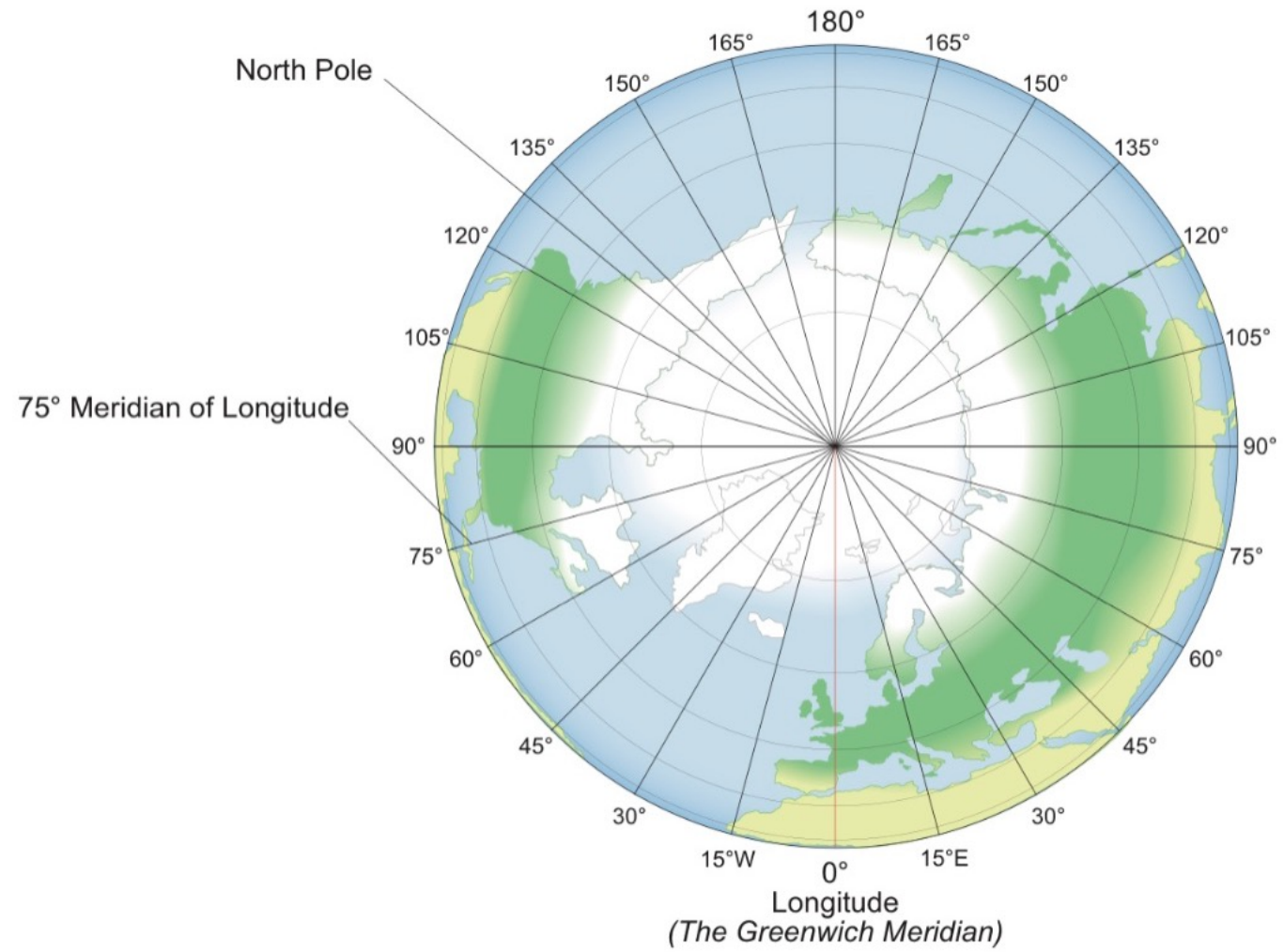


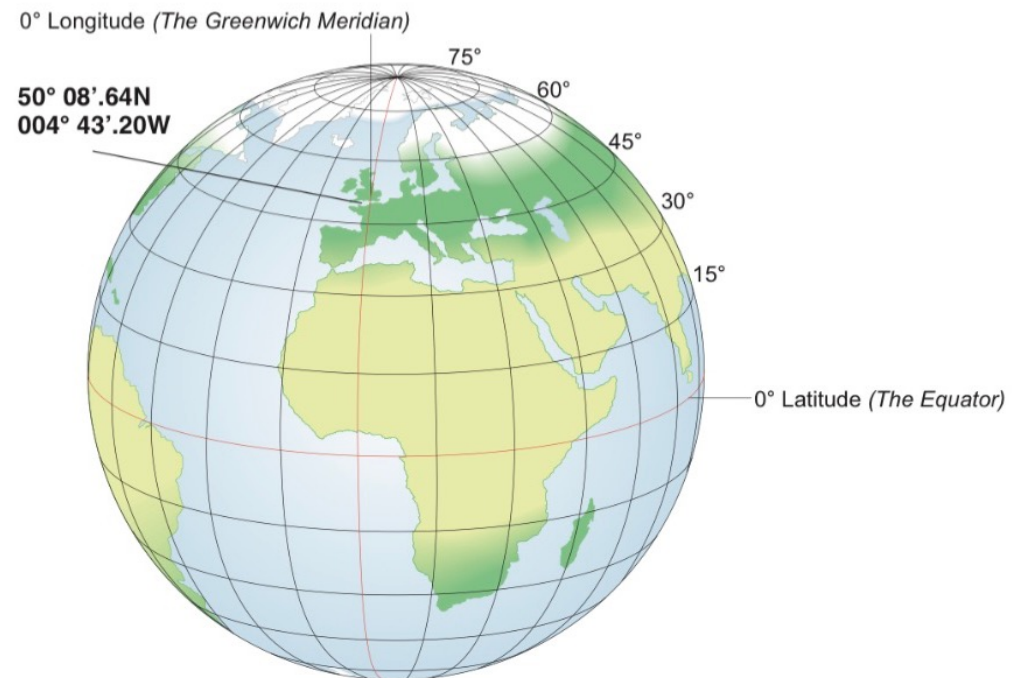
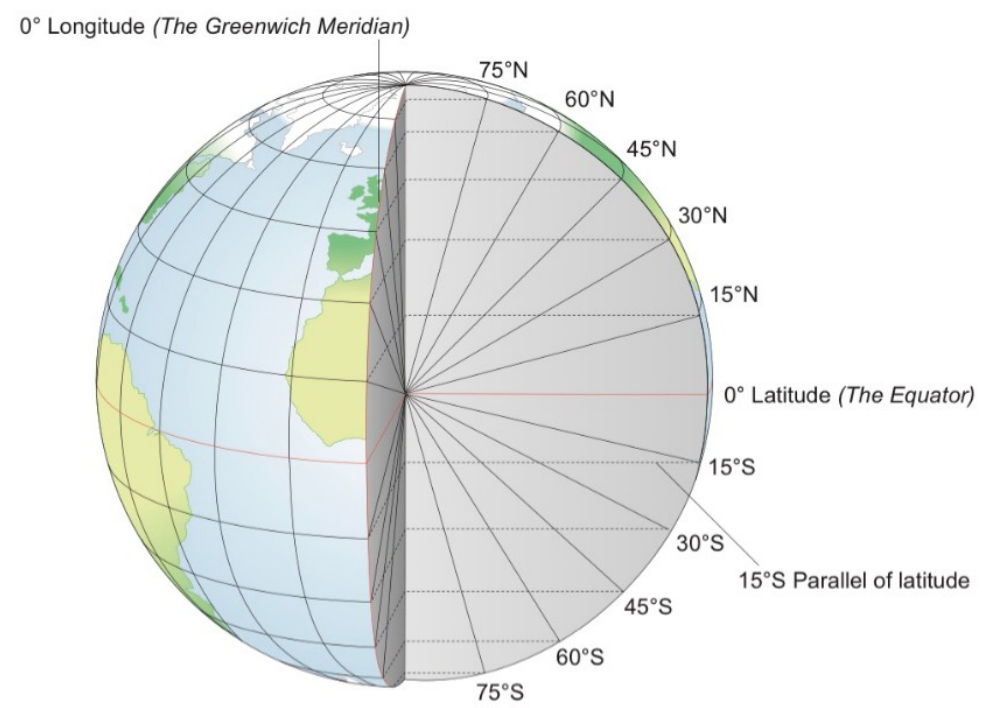
latitude et longitude

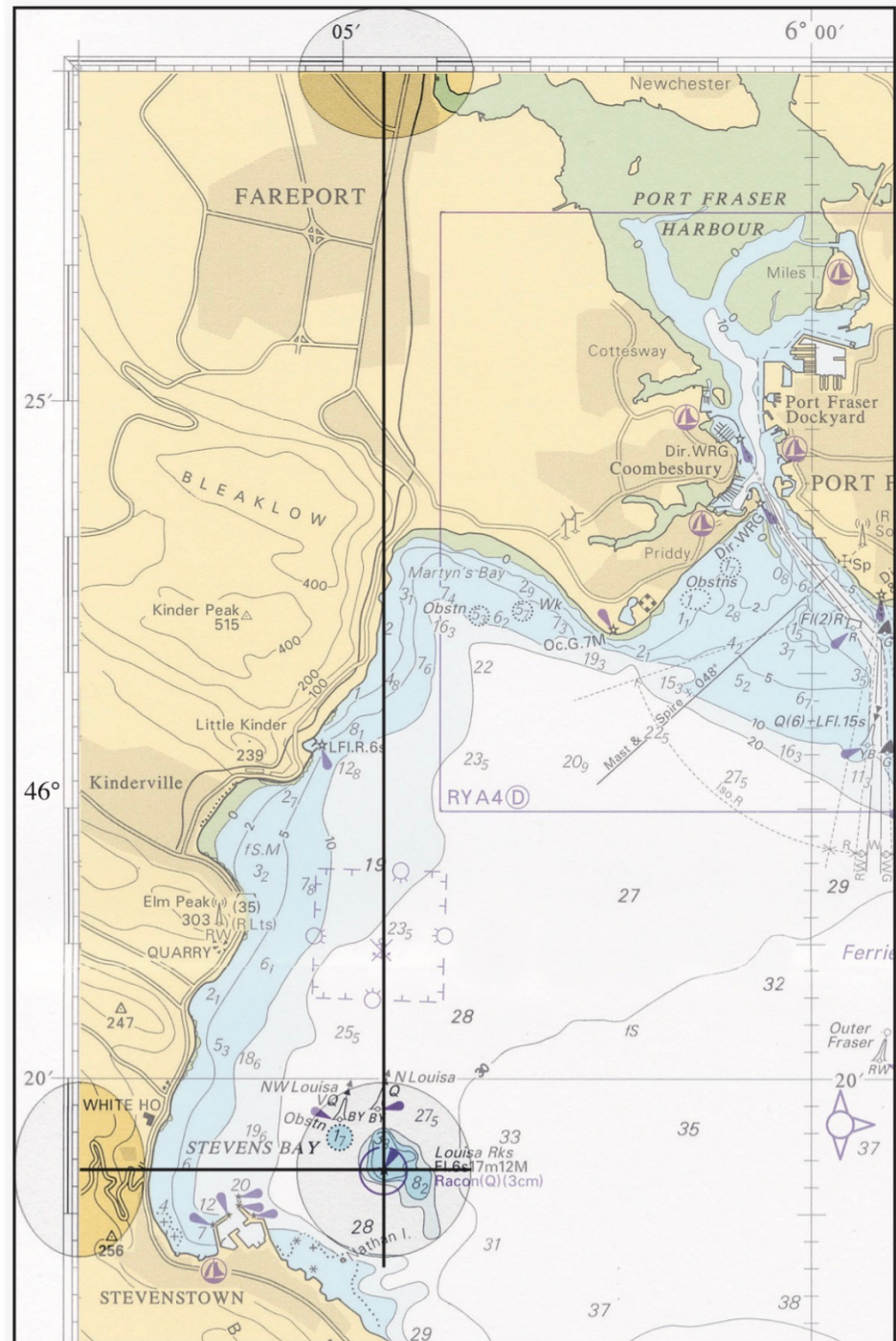








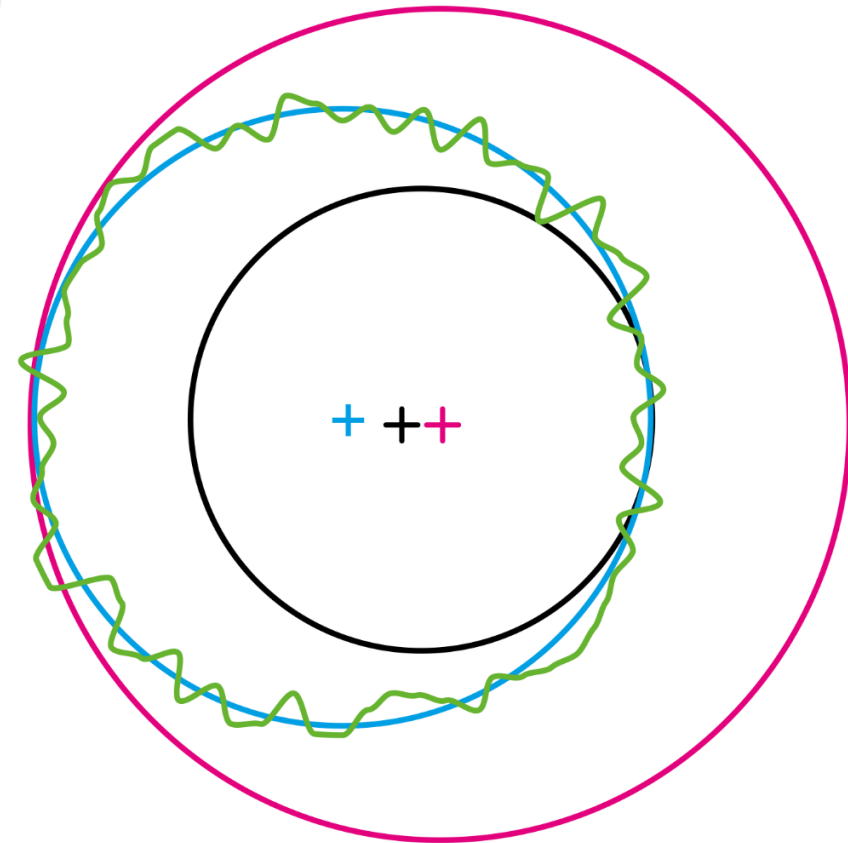
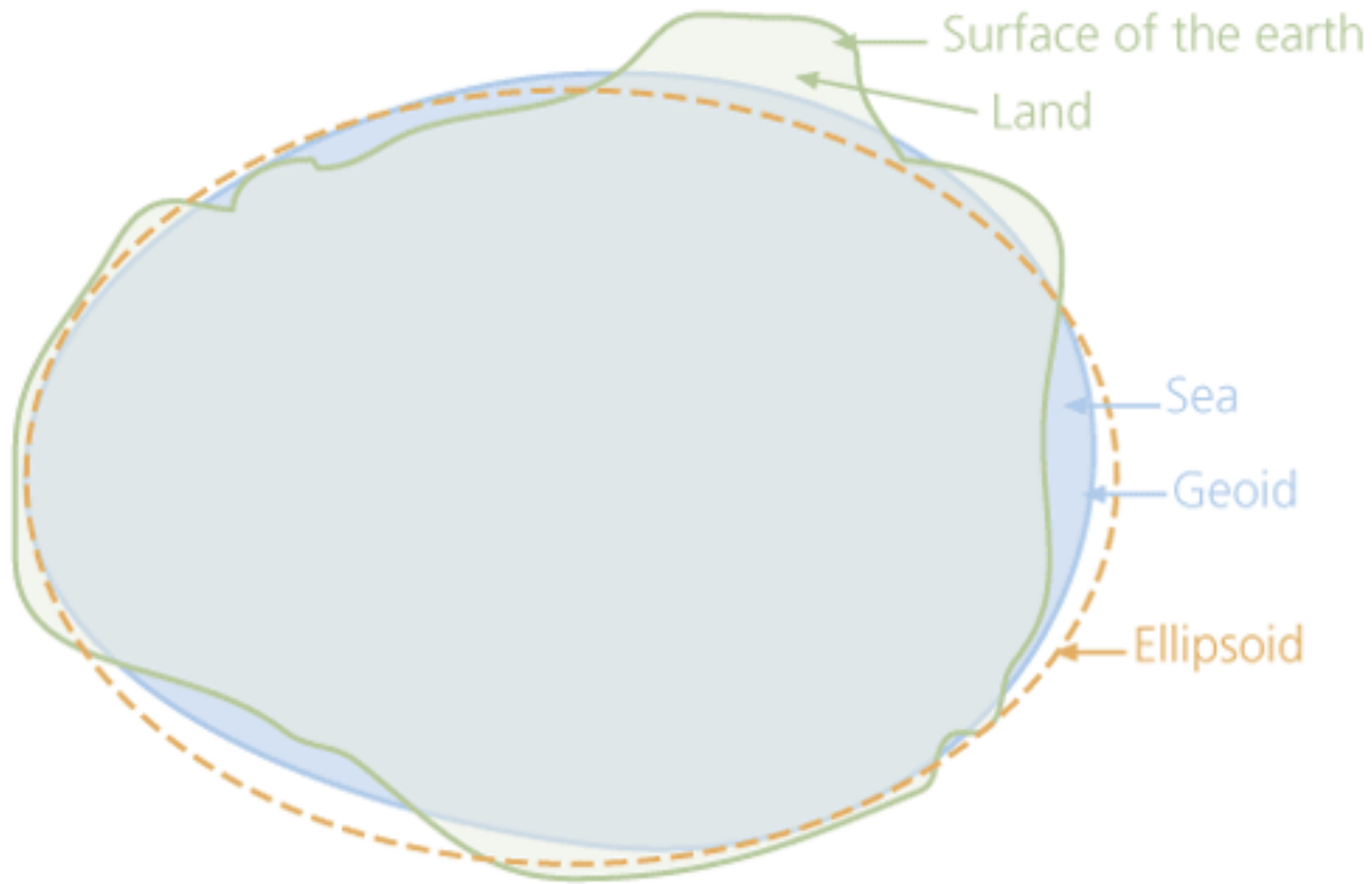




ajustements horizontal et vertical



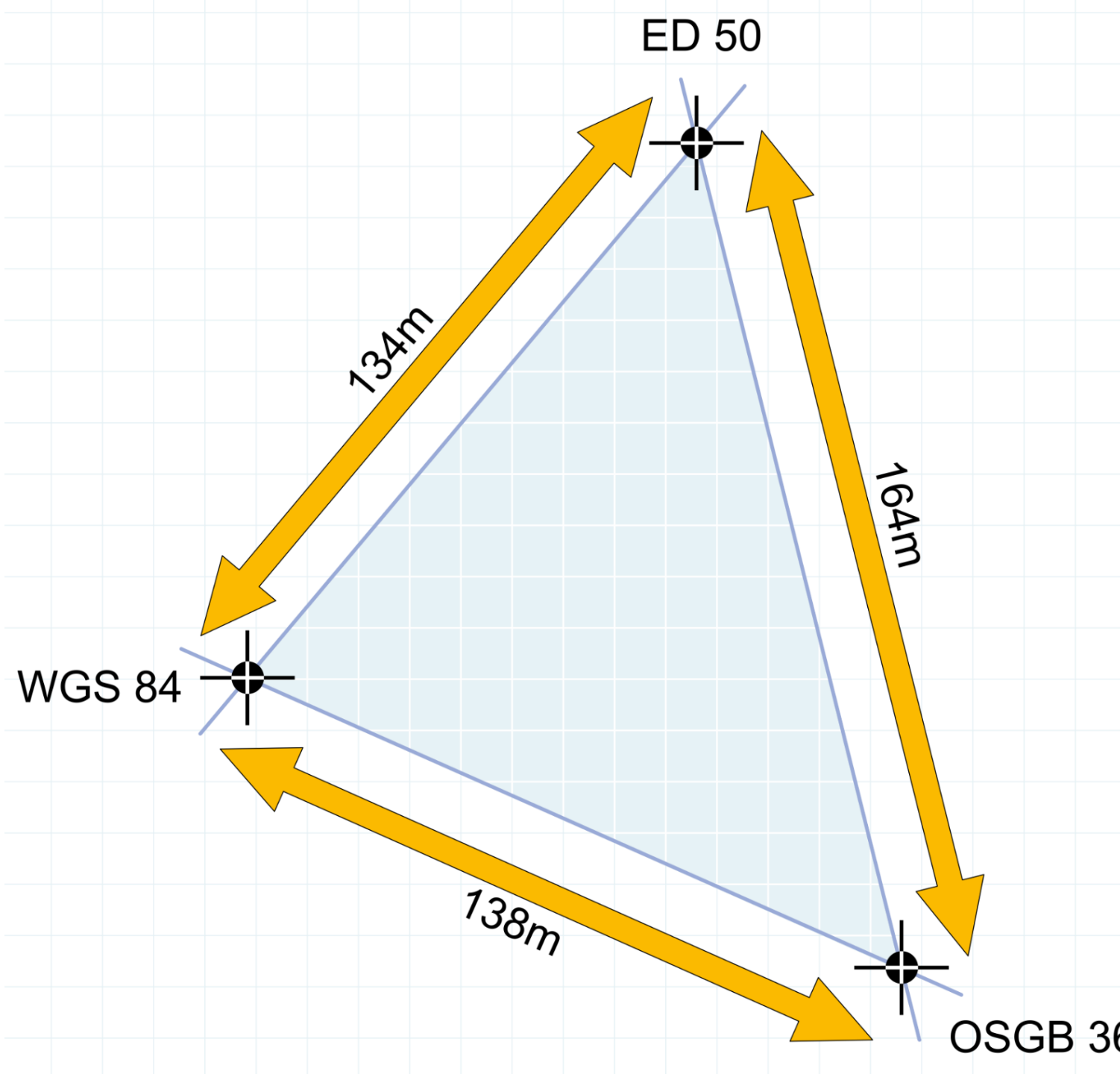
Model of the Earth



- Actual Earth/Geoid
- Small sphere
- Best fit WGS84
- Large spheroid

Horizontal datums

- OSGB 36
- ED 50
- WGS 72
- WGS 84
- ETRS 89



TRAINING CHART 3

NOT TO BE USED FOR NAVIGATION

DEPTHS IN METRES

SCALE 1:100 000 at Lat 46°00'

Depths are in metres and are reduced to Chart Datum, which is approximately the level of Lowest Astronomical Tide.

Heights are in metres. Underlined figures are drying heights above Chart Datum. Vertical clearance heights are above Highest Astronomical Tide. All other heights are above Mean High Water Springs.

Positions are referred to **WGS84** Datum (see SATELLITE-DERIVED POSITIONS note).

Navigational marks: IALA Maritime Buoyage System - Region A (Red to port): Region B (Red to Starboard) in the Neptune Islands.

Projection: Mercator.

Sources: The origin, scale, date and limits of the hydrographic information used to compile the chart are shown in the Source Diagram. Depths in upright figures are from older surveys.

SATELLITE-DERIVED POSITIONS

- Positions obtained from satellite navigation systems, such as **GPS**, are normally referred to **WGS84** Datum. Such positions can be plotted directly on this chart.

NEPTUNE ISLANDS - BUOYAGE

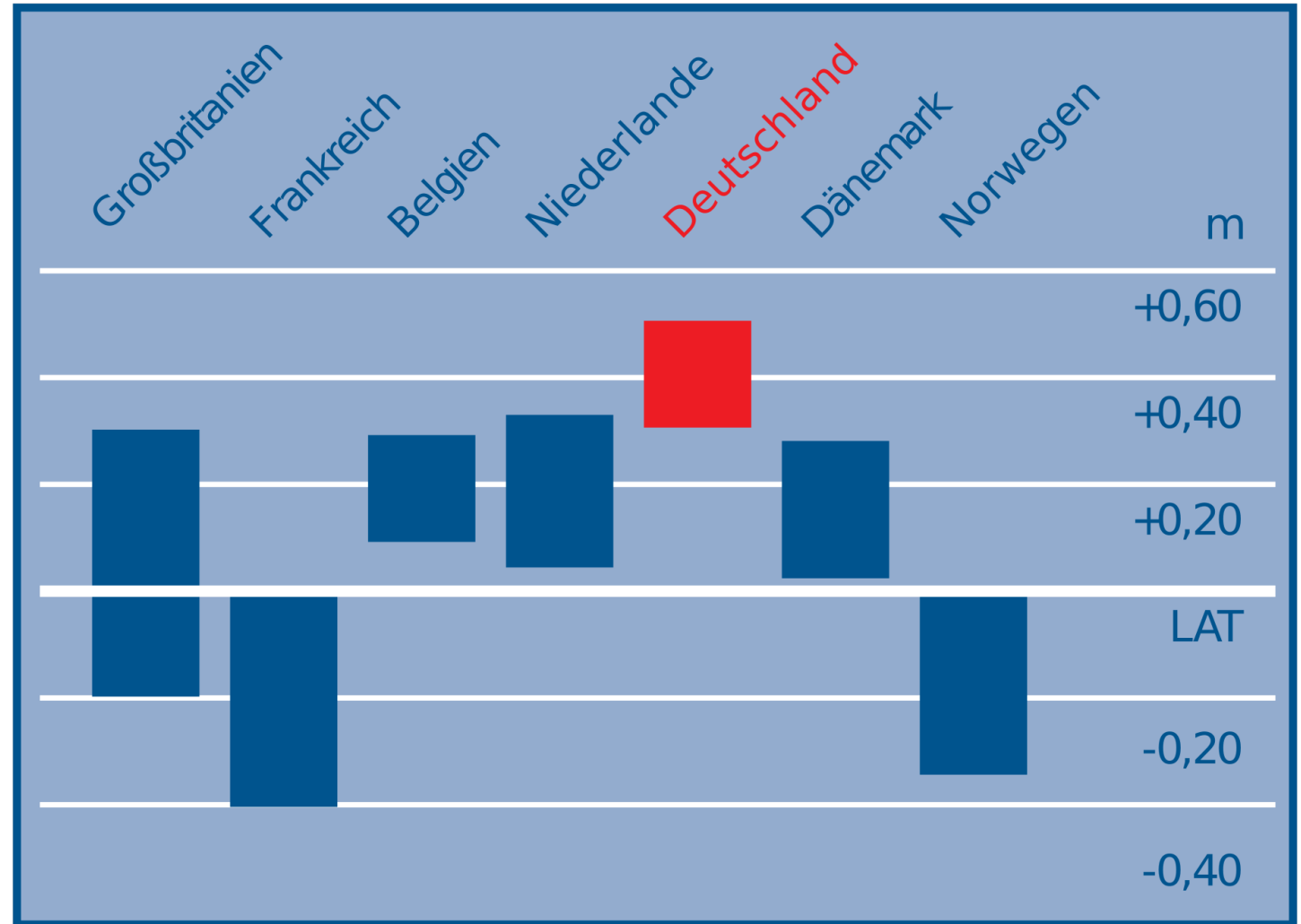
The territorial waters of Neptunia fall within the IALA Maritime Buoyage System - Region B (Red to Starboard). Mariners are advised to exercise caution when changing IALA regions.

PIPELINES

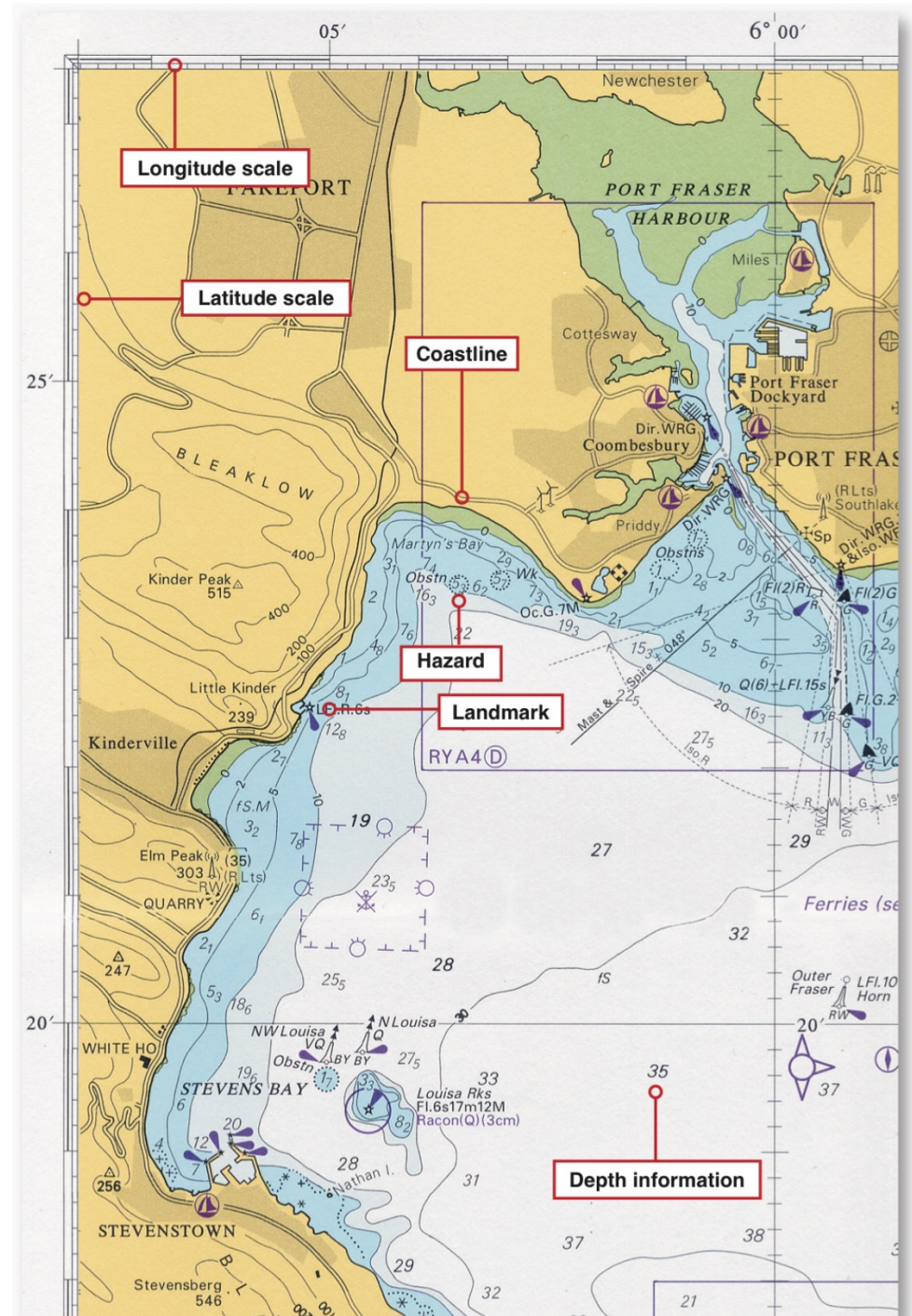
Mariners are advised not to anchor or trawl in the vicinity of pipelines. Gas from a damaged oil or gas pipeline could cause an explosion, loss of a vessel's buoyancy or other serious hazard. Pipelines are not always buried and may effectively reduce the charted depth by up to 2 metres. They may also span seabed undulations and cause fishing gear to become irrecoverably snagged, putting a vessel in severe danger. See Annual Notice to Mariners No 24.

zero vertical des cartes

- IMO depuis 1993 -> LAT
- Europe : 2020



info dans la carte



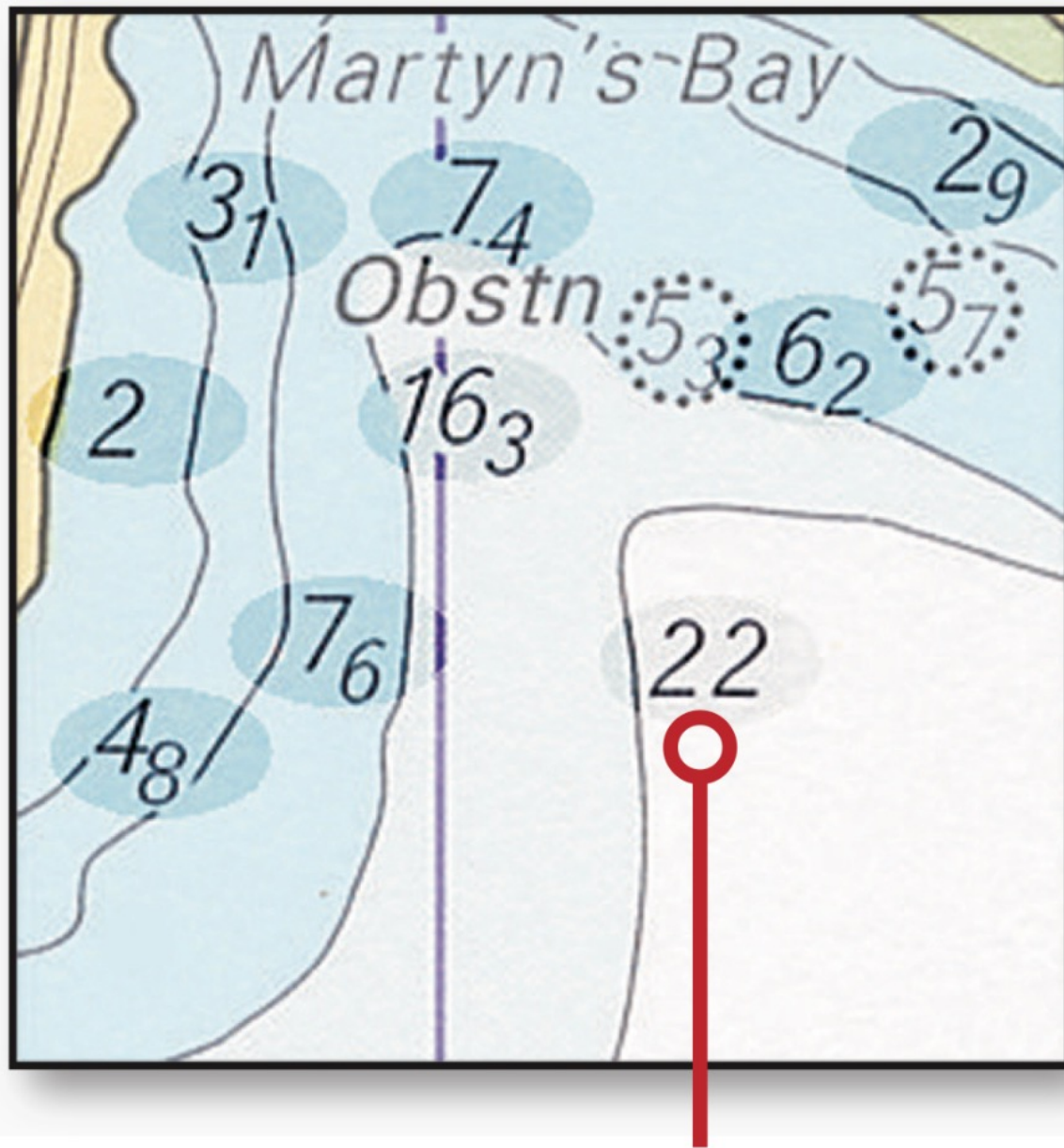


Fig 1: Spot depths show the depth at particular spots

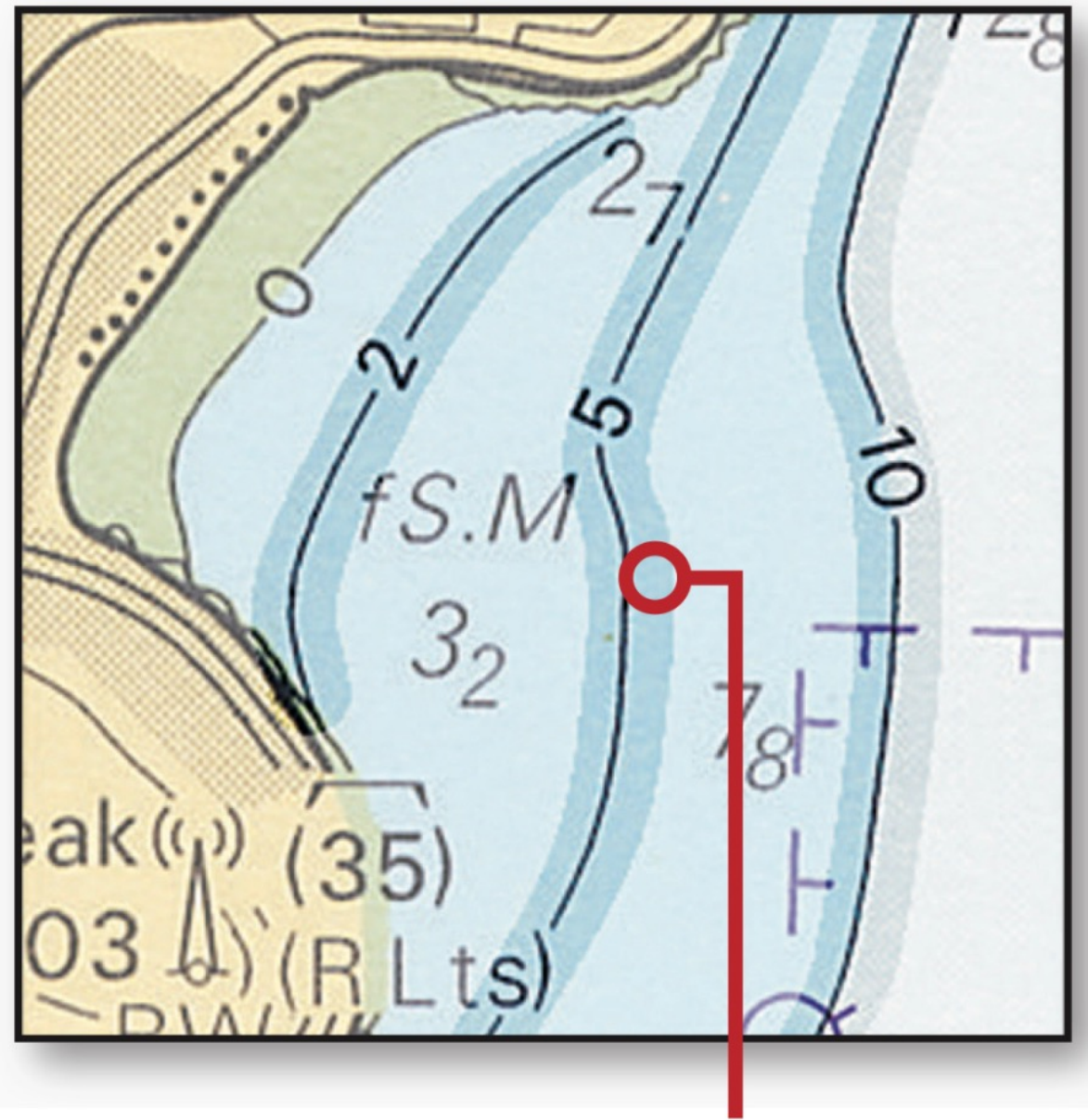


Fig 2: Contours are lines that divide shallow water from deep

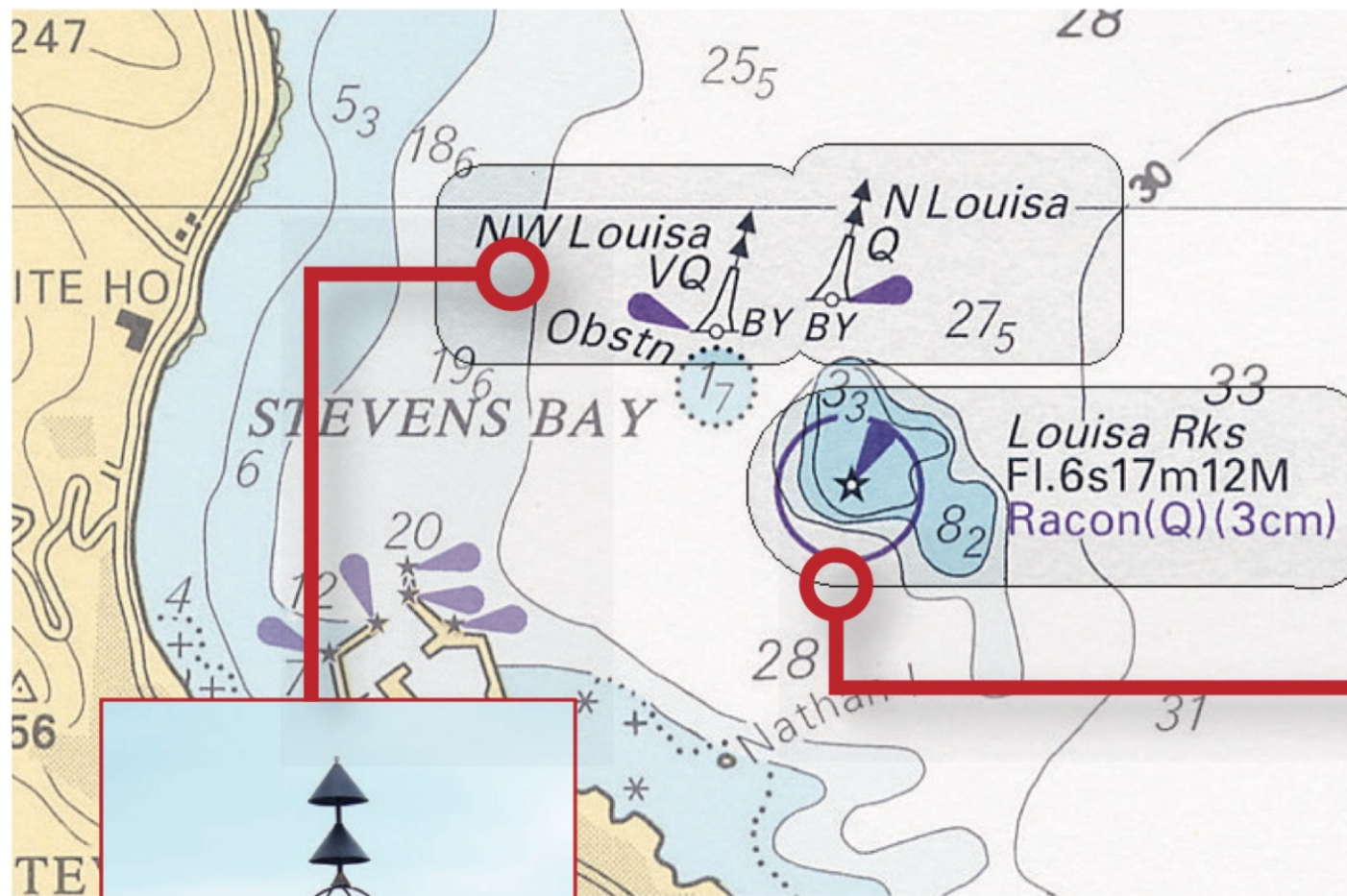
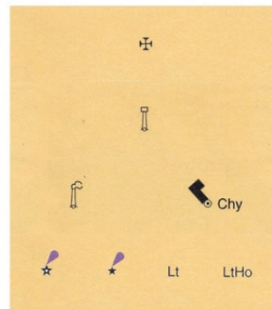
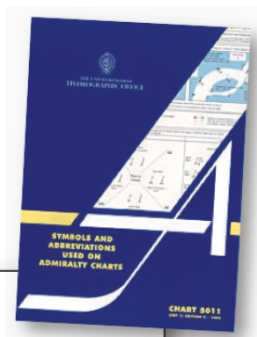


Fig 3: A star-shaped symbol represents a lighthouse



Fig 4: Buoys are represented by pictures of the buoys themselves

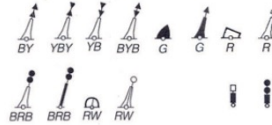


Church

Water tower, Water tank on a tower

Chimney

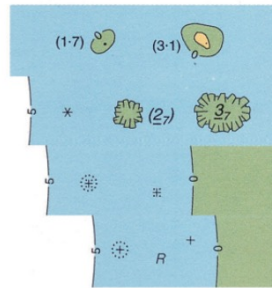
Major light, minor light, light, lighthouse



Buoys, beacons



Lighted beacon tower, beacons



Rock which does not cover, height above MHWS

Rock which covers and uncovers, height above Chart Datum, where known

Rock awash at the level of Chart Datum

Underwater rock over which the depth is unknown, but which is considered dangerous to surface navigation

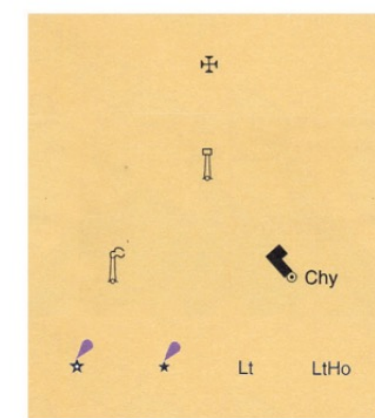
Wreck showing any part of hull or superstructure at the level of Chart Datum

Wreck, depth unknown, which is not considered dangerous to surface navigation



Anchoring prohibited

Fishing prohibited



Church

Water tower, Water tank on a tower

Chimney

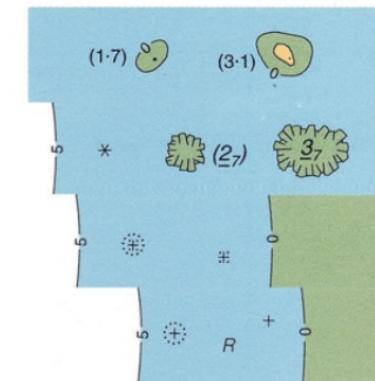
Major light, minor light, light, lighthouse



Buoys, beacons



Lighted beacon tower, beacons



Rock which does not cover, height above MHWS

Rock which covers and uncovers, height above Chart Datum, where known

Rock awash at the level of Chart Datum

Underwater rock over which the depth is unknown, but which is considered dangerous to surface navigation

Wreck showing any part of hull or superstructure at the level of Chart Datum

Wreck, depth unknown, which is not considered dangerous to surface navigation



Anchoring prohibited

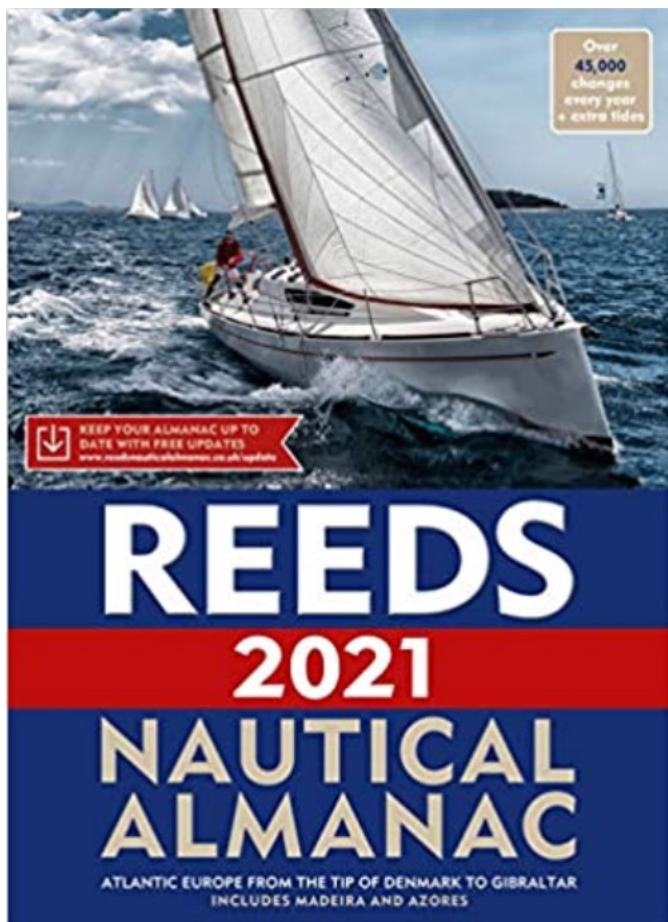
Fishing prohibited

Fig 1: A few of the most important chart symbols

publications les plus communes

- tables des marées
- atlas des courants
- listes des feux
- listes des signaux radio

- Almanach du navigateur



mise-à-jour des cartes

- notices to mariners
- groupe d'avis aux navigateurs

3698* ENGLAND, South Coast — The Solent and Isle of Wight — Ryde Middle and Ryde Pier Westwards — Beacon; Buoy; Fog signal

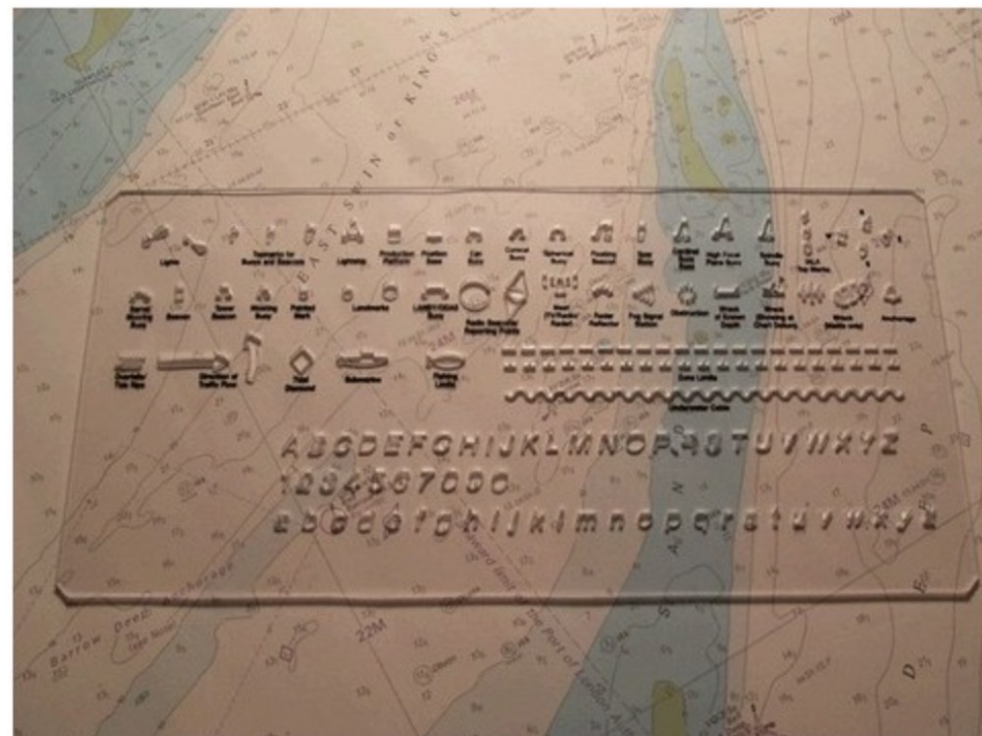
Substitute port-hand beacon with topmark for port-hand can buoy 50° 44'·27N., 1° 09'·86W.

Delete fog signal, Bell, at S Ryde Middle light-buoy,
(chart 2045, fog signal, Bell, at starboard-hand
conical light-buoy)

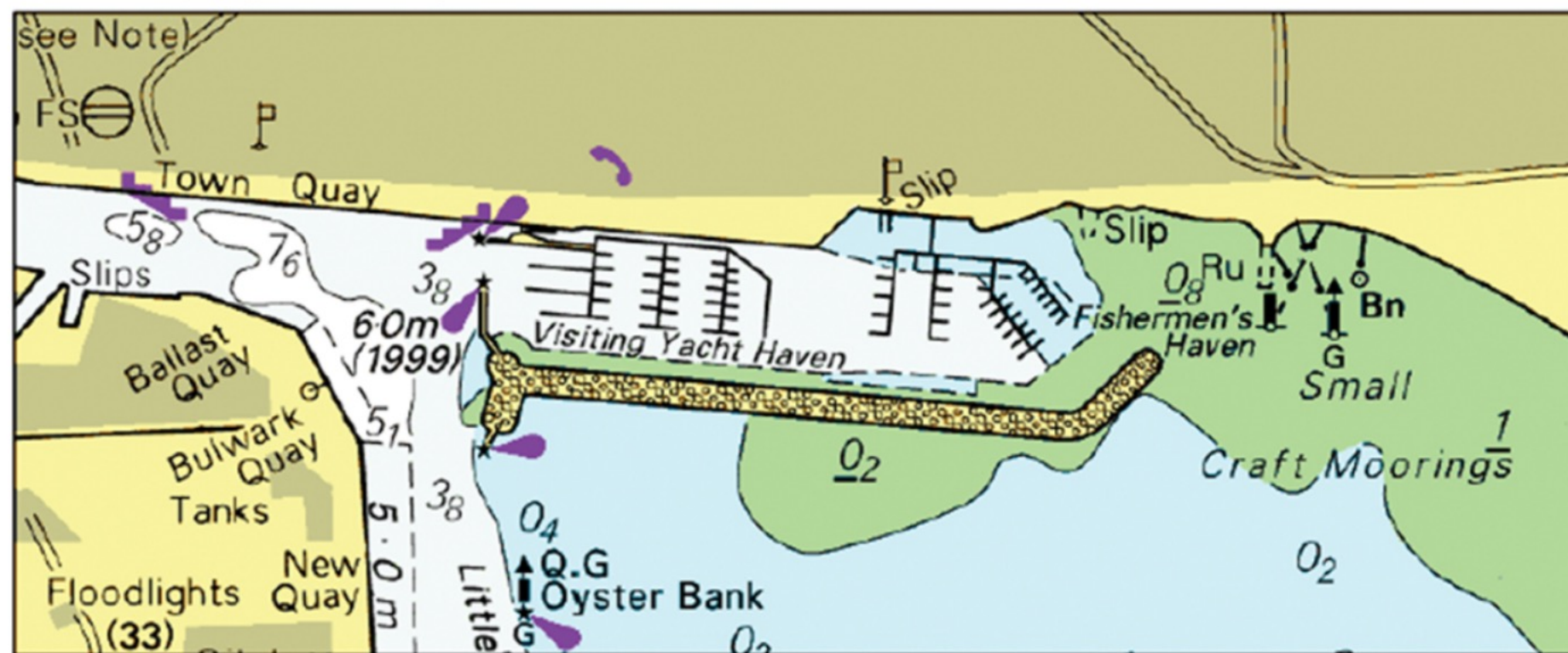
(a) 50° 46'·13N., 1° 14'·15W.

Note: **Positions** on both of the charts affected by this notice are referred to a **WGS84** compatible datum. See list of **ADMIRALTY CHARTS OF GREAT BRITAIN THAT ARE REFERRED TO A WGS84 COMPATIBLE DATUM** (near the beginning of this publication) and NM 4731(P)/00.

Chart [*Last correction*].— **2036** (INT 1730) [2628/02] — **2045** (a) [3453/02]
Queen's Harbour Master, Portsmouth (HH.232/600/08).



To accompany Admiralty Notice to Mariners No 2452 of 2001



Block for Chart No 2611

travail sur la carte

- compas pointe sèche
- règle
 - règle Cras
 - rapporteur breton ou Portland plotter

