



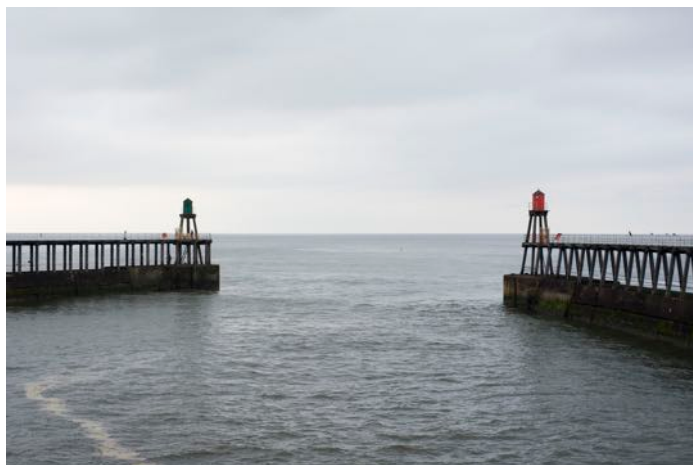
# Certificat B

---

NAVIGATION

## Pilotage

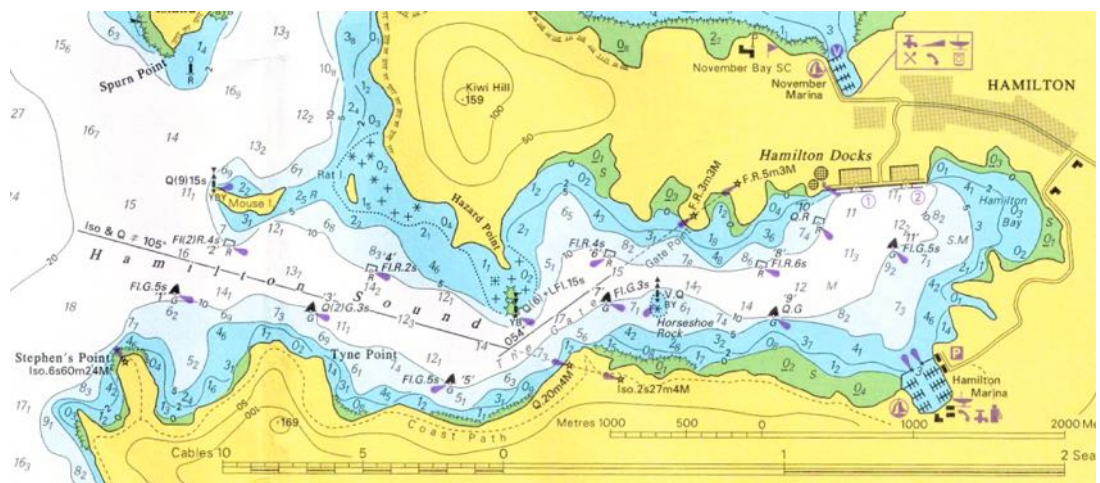
---



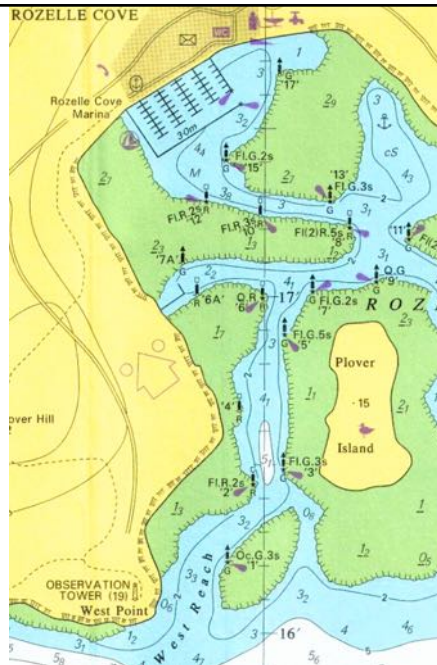
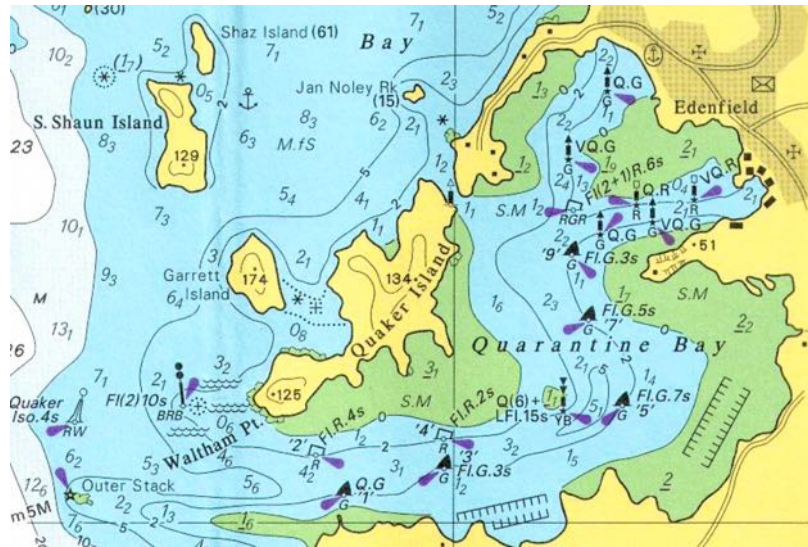
# Pilotage



3

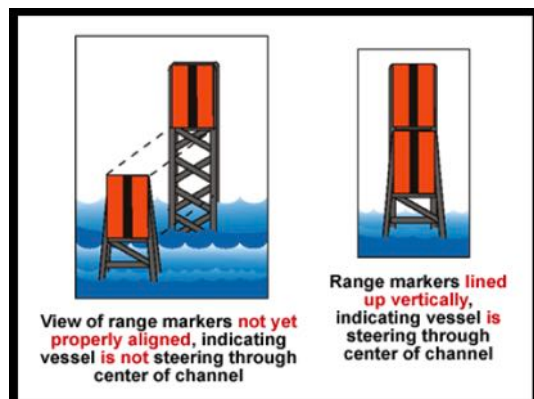
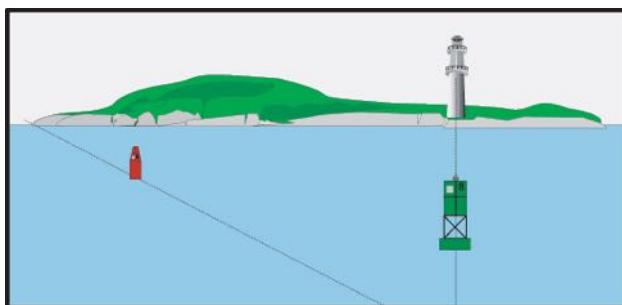


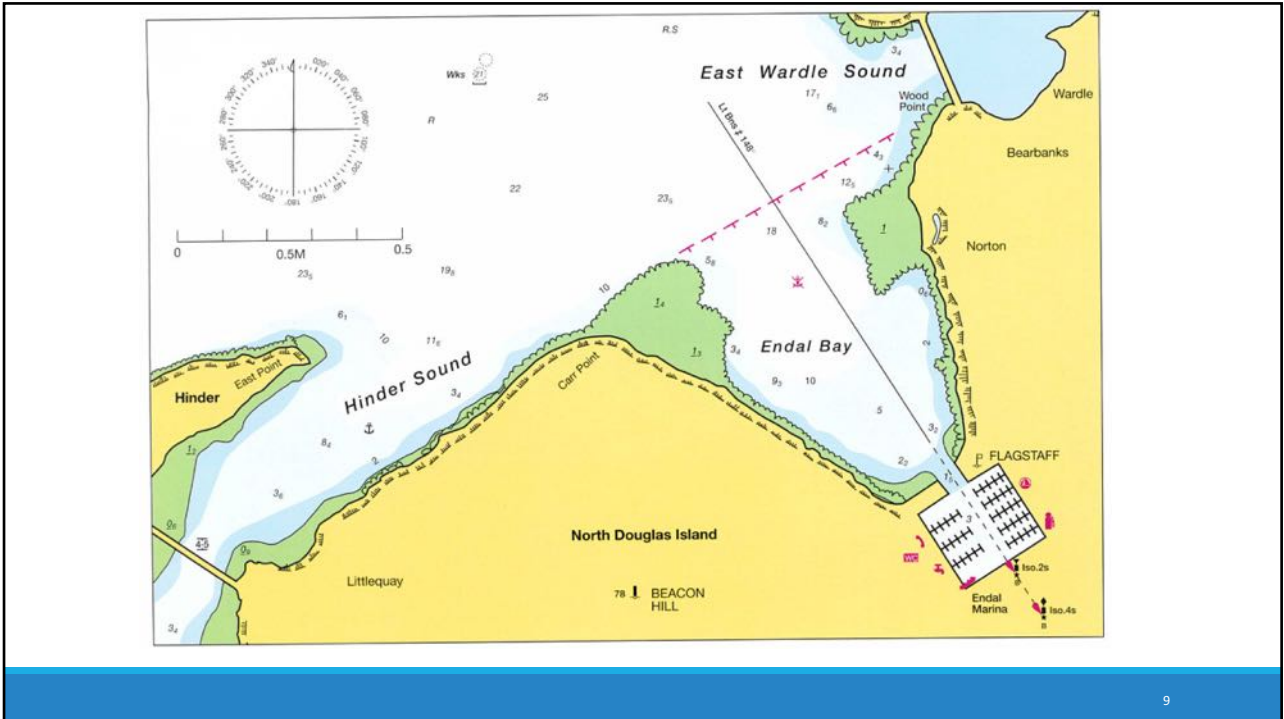
4



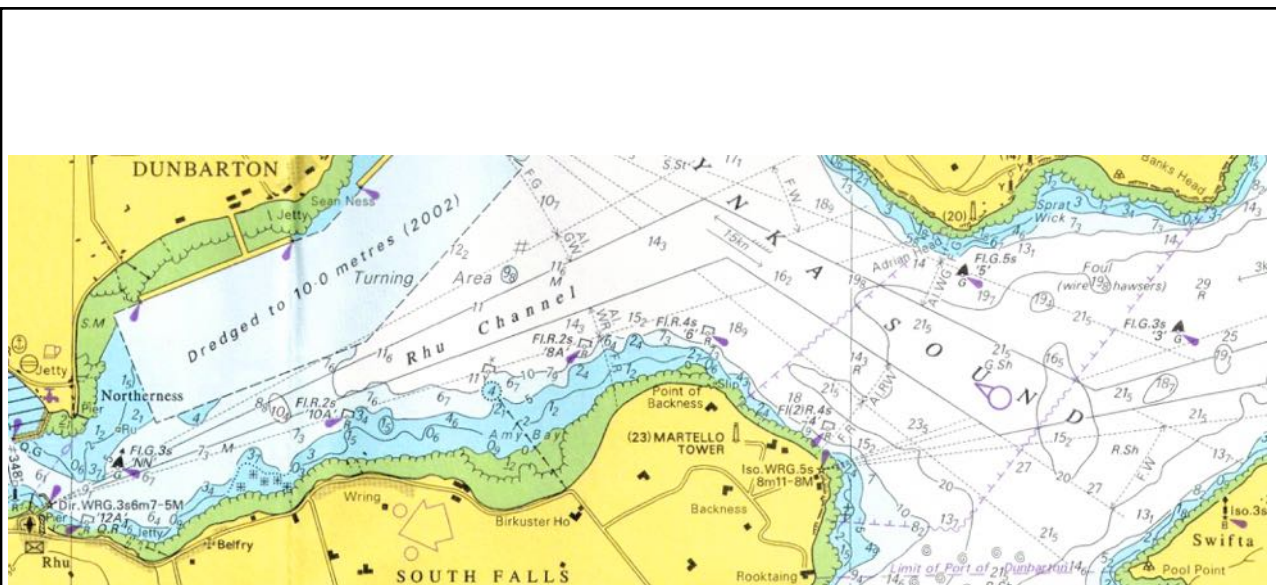
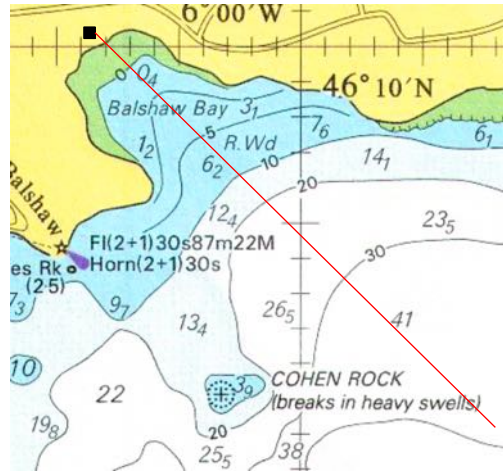


## Transits & Leading lines





# Bearing / Peilung





# Sectored lights

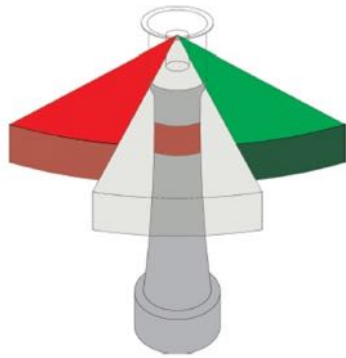
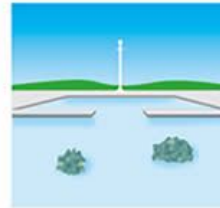
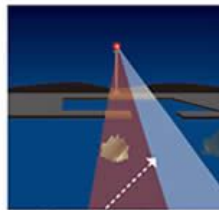


FIG: SECTOR LIGHT

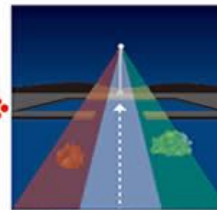
## Design Concept of the Sector Light



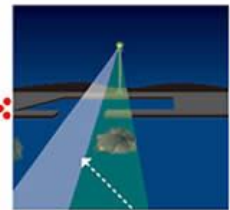
Daytime



Red light: starboard  
If a ship entering the port deviates to the left, the sector light guides it to the starboard side with red light.

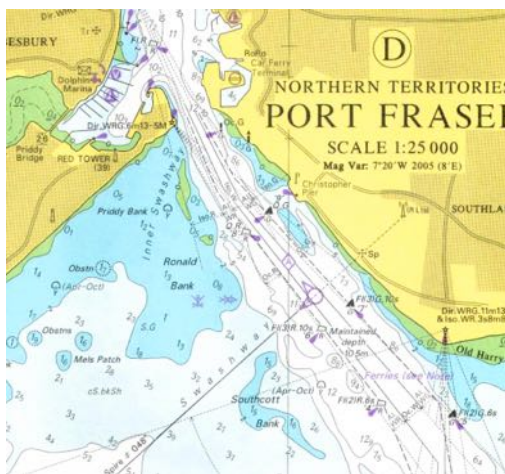


White light: straight ahead  
The sector light guides a ship straight to the port with white light.



Green light: port  
If a ship entering the port deviates to the right, the sector light guides it to the port side with green light.

# Avoid the channel





## Pilotage Plan

---

- charts
- pilot books
- almanacs
- tourist guides
- web (Google Earth)
- etc.
- tides
- sunrise/sunset
- currents
- weather
- locks, bridges, sill, etc.

17

## Pilotage Plan

---

- list
- notes
- diagrams, drawings



18